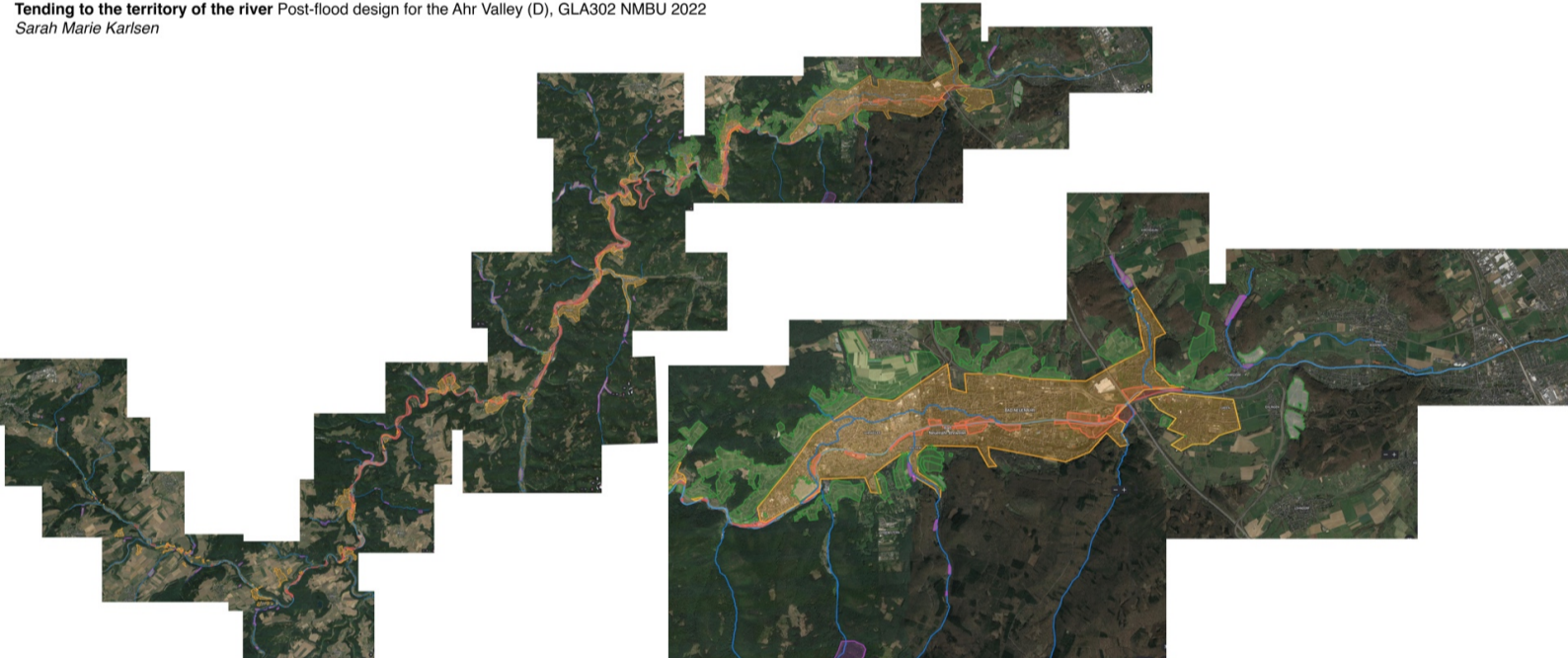




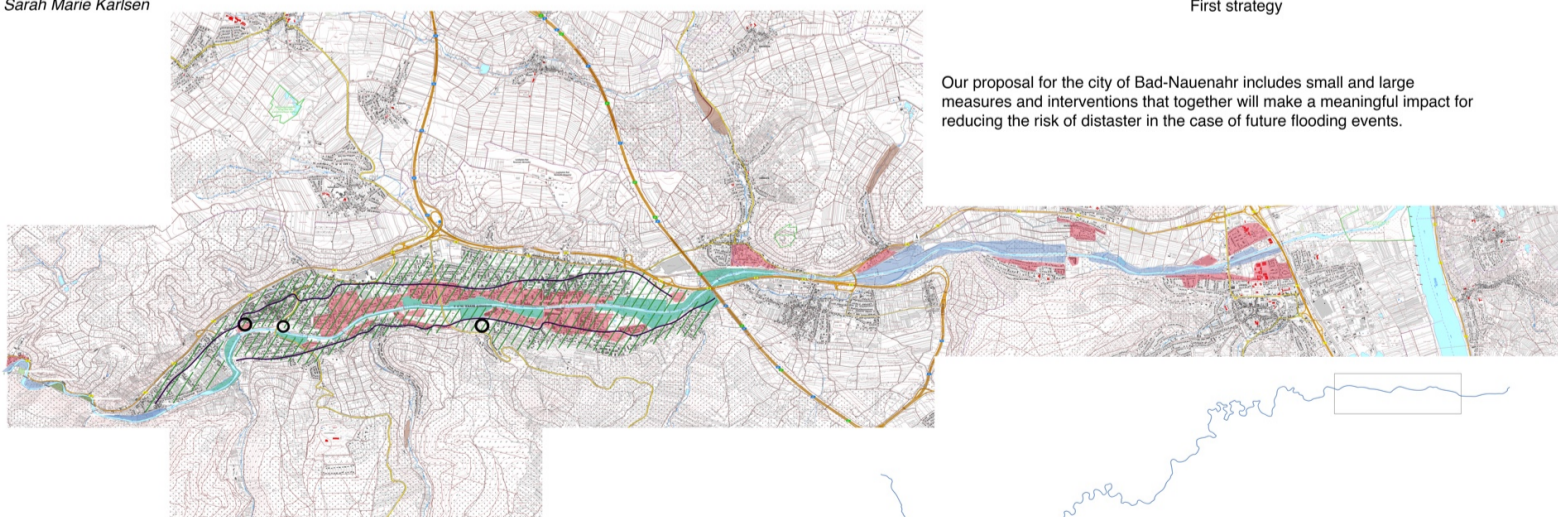
(New York Times)



Bad Neuenahr-Ahrweiler  
Flood of July 2021

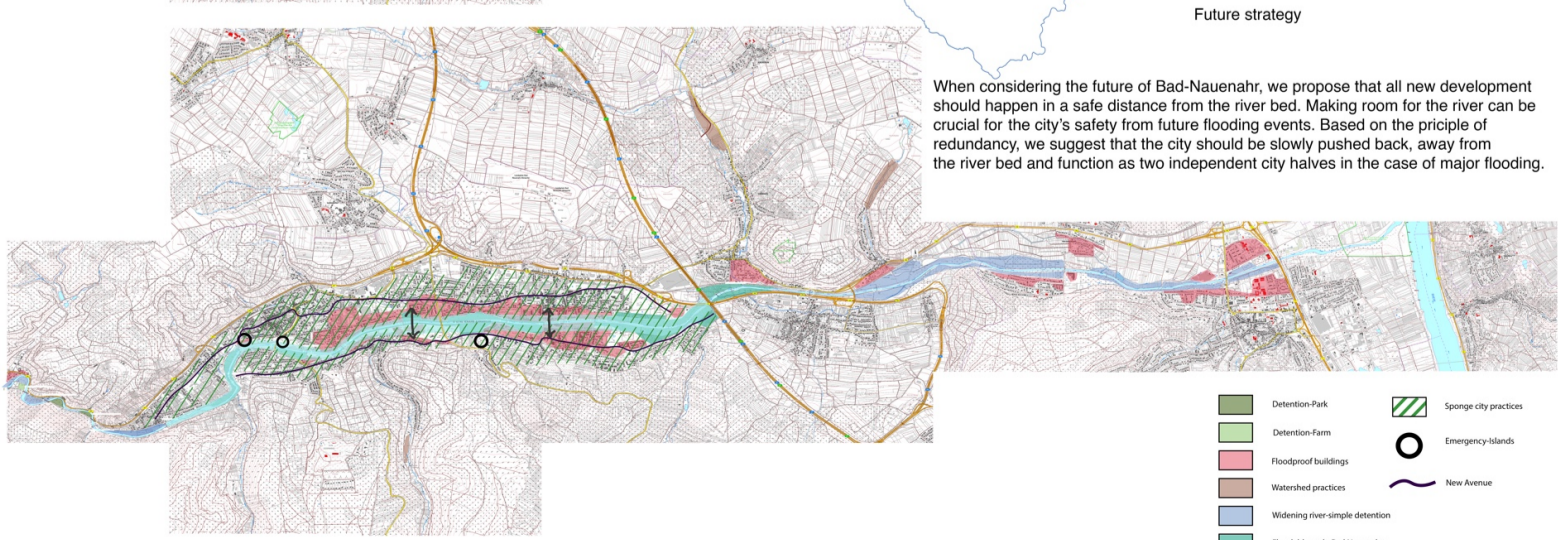
- Blue line: River Ahr
- Blue line: Tributaries
- Red area: Open Spaces
- Orange area: Settlement
- Green area: Vineyards
- Purple area: Upper Potential Grounds

First strategy



Our proposal for the city of Bad-Nauenahr includes small and large measures and interventions that together will make a meaningful impact for reducing the risk of disaster in the case of future flooding events.

Future strategy



When considering the future of Bad-Nauenahr, we propose that all new development should happen in a safe distance from the river bed. Making room for the river can be crucial for the city's safety from future flooding events. Based on the principle of redundancy, we suggest that the city should be slowly pushed back, away from the river bed and function as two independent city halves in the case of major flooding.

- Green square: Detention-Park
- Light green square: Detention-Farm
- Red square: Floodproof buildings
- Orange square: Watershed practices
- Blue square: Widening river-simple detention
- Light blue square: Floodable park-Bad Neuenahr
- Green square with diagonal lines: Sponge city practices
- Black circle: Emergency-islands
- Blue line: New Avenue