

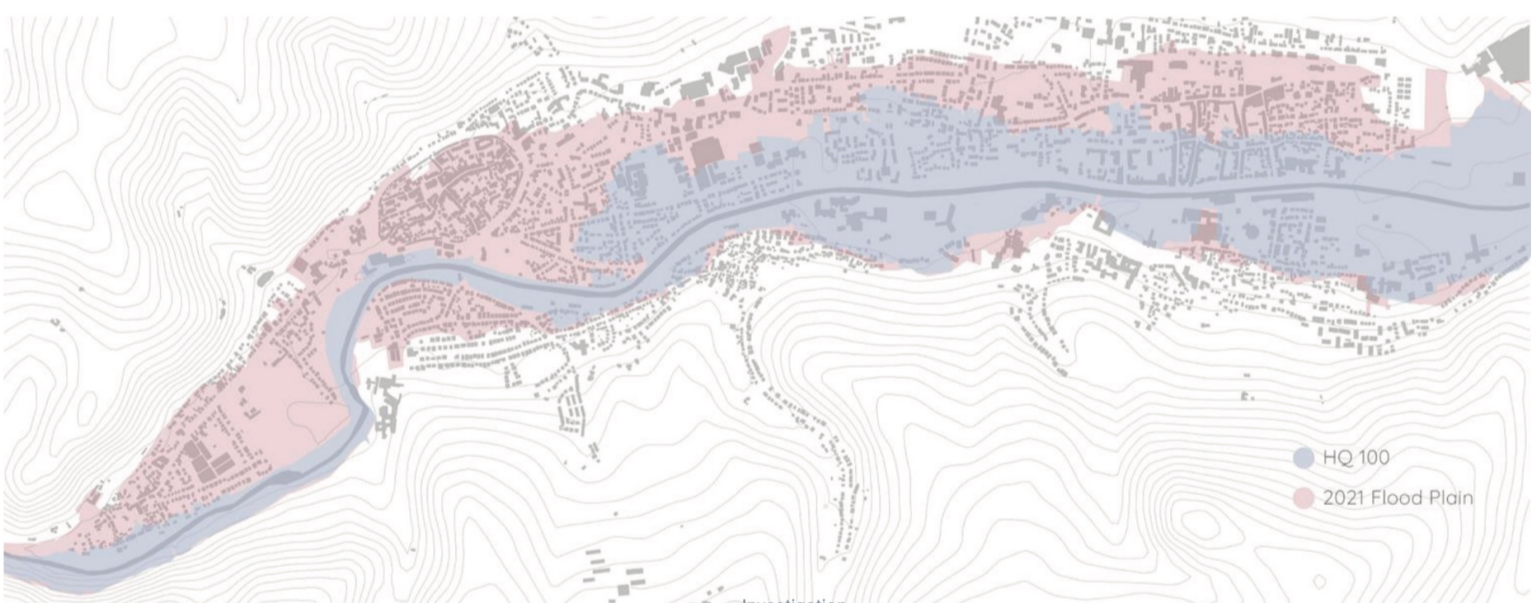


Photo: Wolfgang Rattay, Reuters/NTB, 2021



--- Suggested Detention Park in Dernau

3D Map: Google Earth, 2022

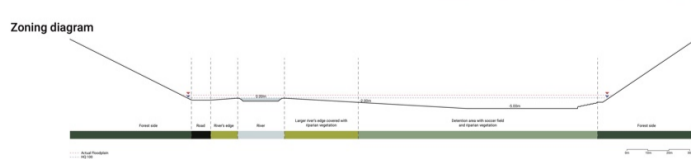


Investigation

July 2021 Germany was hit by an extreme flood event that was one of the most severe natural catastrophes in Europe in the last half century. Rainfall around 150 mm within 15 to 18 hours led to the severe flood at 14 and 15 July 2021. 180 people were killed and over 10,000 buildings were damaged.

It's critical to make the city of Bad-nuenahr resilient for future flood events to prevent new disasters like the one in 2021, but flood risk is difficult to manage where there is already development. If we are not moving the residents away from their homes in the danger zone, we need to implement elements that can lower the water level and reduce the risk of future floods.

- 
 Improve the river condition
 Room for the river
- 
 Well-being of the residents
 Flood-water retention
- 
 Improve wildlife by creating new habitats
 People-nature connection



The projects aim is to adapt the communities next to the river Ahr to periodic floodings, by improving the open spaces next to the river and make them floodable. By implementing recreational spaces with focus on nature-people relations, the design will benefit the community, and will contribute to enhanced wildlife and river condition.

Flood detention basins next to the river, will capture, store and slow down the water during a flood, and will affect the amount of water that gets into the river. Riparian vegetation will be implemented next to the river, which will improve the riverbanks sensitivity to flood.

