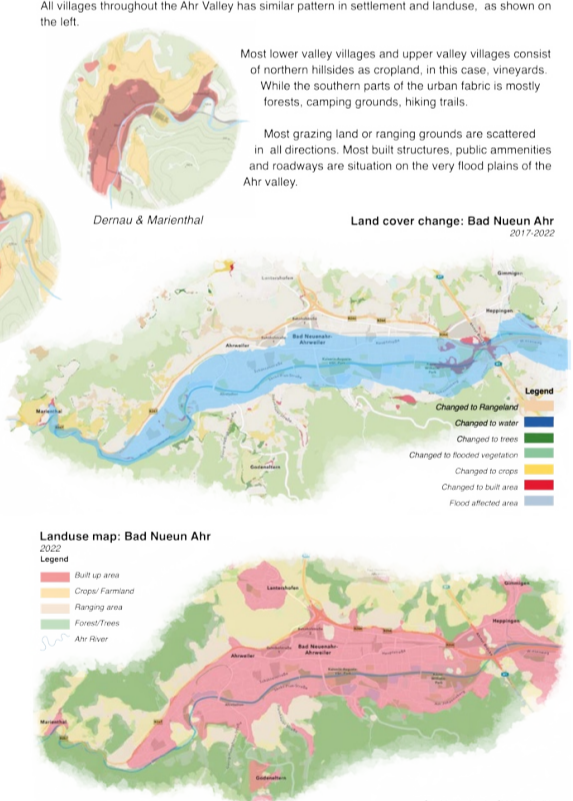
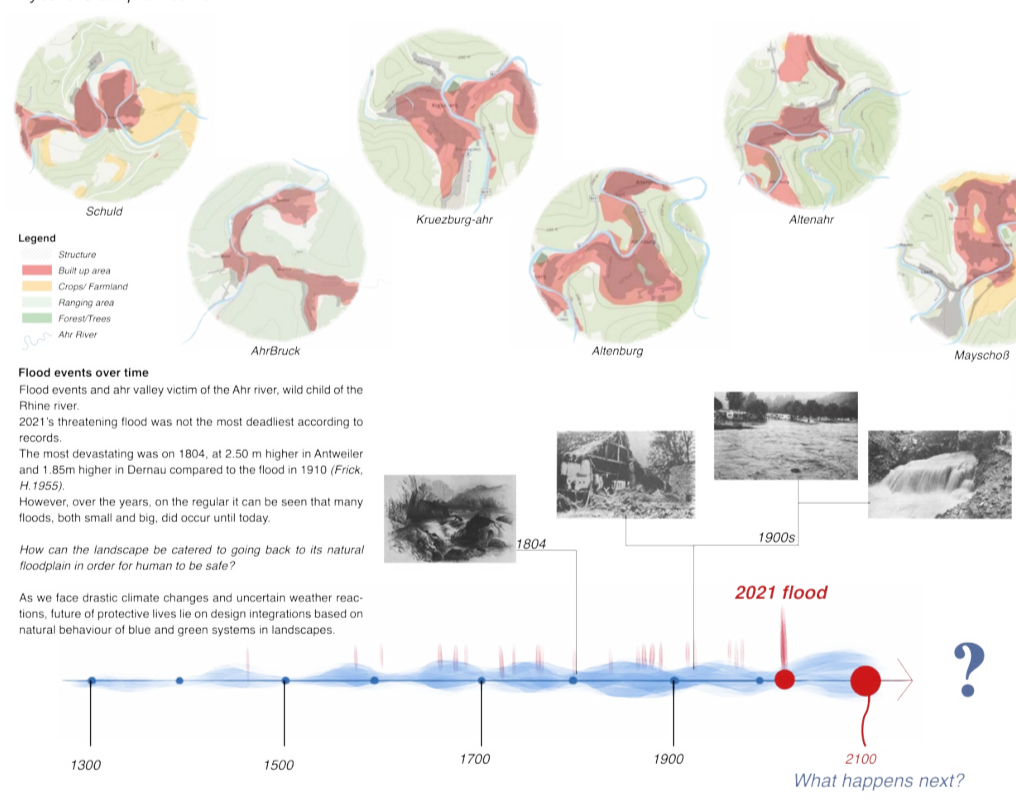




Vogel F. 2021



Urban Interventions connecting the cycle paths

The interventions consist of various urban retention areas that connect to the cycle path via an underground system. The retention zones marked in yellow helps store water temporarily in a flood event, release after a certain period of time after the flood, mimicking slow, tame winter floods. The aim of these zones is to allow water to be held and to guide the excess flood water in, severe cases to a secondary pathway underneath the outer most cycle path, eventually connecting to the river Rhine. This system allows to manage flood water in two extremes, helping water flow out of the city in a guided manner, eventually taming the flood. Given the tributary strategies in the upper valley, the flood water will be less intense.



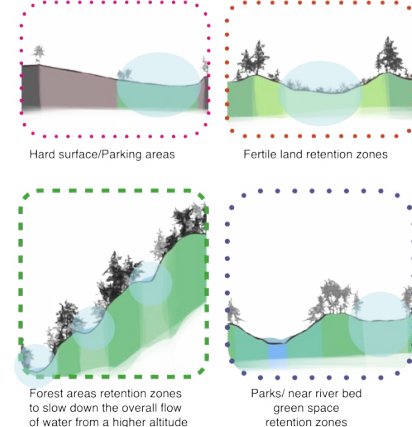
Section A-A' (present situation)



Retention zones within the two cycle-paths



Section A-A' after interventions



Underground system connecting the retention zones in between the two cyclepaths



All the retention zones when unable to hold the first phase of the flood water will overflow into the underground system which directs the water in a constructed manner. Therefore the floodwater enters via underneath cyclepath next to the riverbed and is taken out of the city via exiting the cycle-path at the outmost part of the city.

Graphics by Ayesha Siddiqua Nedhie