

LET THE RIVER FLOW

About Schuld

The Ahr River in Germany is a tributary (left) of the Rhine. Its' source is at an elevation of about 470 meters above sea level in the Blankenheim in the Eifel, after 18 kilometers it crosses from North Rhine-Westphalia into Rhineland Palatinate.

Schuld is a municipality in the district of Ahrweiler in Rhineland-Palatinate, Germany on the River ahr. Schuld lies in a narrow loop of the Ahr in the narrow Ahr valley Schuld is 161 meters above sea level

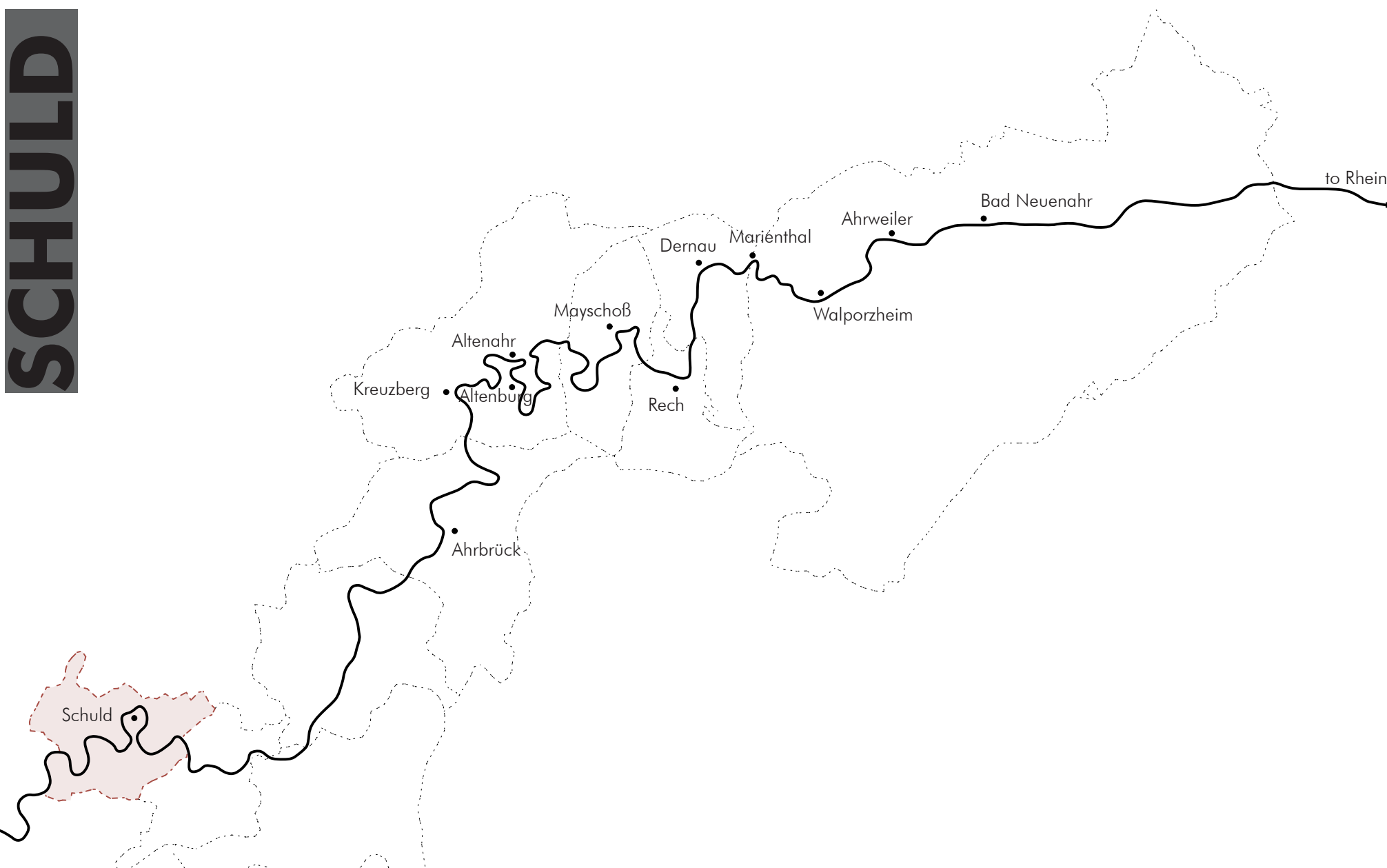
July 14th / 15th 2021

Climate change is showing the first significant tipping point of the climate system: the weakening jet stream "guido halbig- head of the regional branch of the German weather service"

From Wednesday night to Thursday morning 148liters/ of rain fell on the Ahr. In a normal July the region gets about 80liters in the entire month. This volume of precipitation in a such a short span dilated creeks into torrents. Torrents rose and swiftly emptied into the Ahr river which morphed into an implacable surging mass of water.

Houses located beside the valleys are those flooded the most Peak height was predicted to be 7m but the flood in altenahr reached more than 10 m with a discharge of between 400 and 700 m3/s

SCHULD



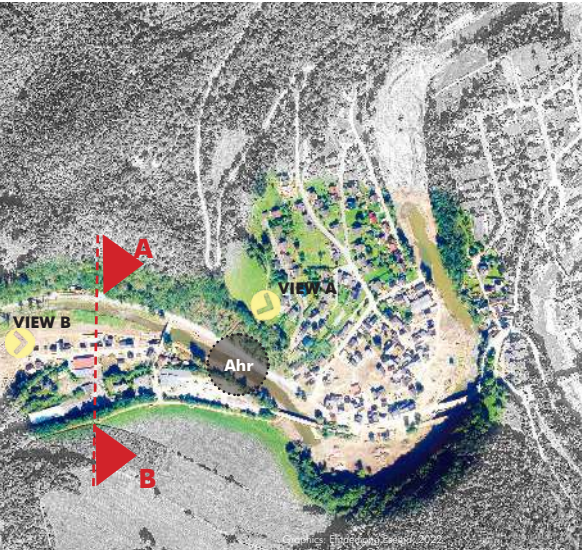
BEFORE THE FLOOD



Focus Map: Campsite

The hardest hit area in Schuld would be the camping site having about 80% of it's structures ripped out and carried with the flood. The good thing is the campers were evacuated before the situation worsened.

Once the water began to cover 90% of the camp houses and carried some campers downstream campers were evacuated to Werschen.



Focus Map: Town center

Another area I looked into was the West section of the town center in Schuld. Not many houses were completely damaged/destroyed by the flood but that does not mean houses were not shook by the floods impact.

A number of conditions had worsened the severity of the flood, including the soil in the region was already saturated and the terrain in some locations with narrow valleys and steep sloping mountains.



Focus Map: Town Center

Also in the Eastern part of Schuld houses were damaged but the damages cause by the flood can be very visible by the pictures and videos from this area. Example the Domhofstraße Bridge.

A large number of buildings are currently unstable and are at risk of collapse. The rescue operation and return of residents were made difficult because of the impossible road between Insul and Schuld.



NEW L73 ROAD



One of the major things discussed on after the flood in Schuld was the construction of a new L73 road which allows access from Schuld to Insul this was a response arrived because the former L73 road had been made unstable by the flood.

The new L73 road is made by opening the old train railway that goes through the mountains. This is said to be a temporary solution and construction continues on the old path.

DEMOLISHED HOUSES



HOUSES



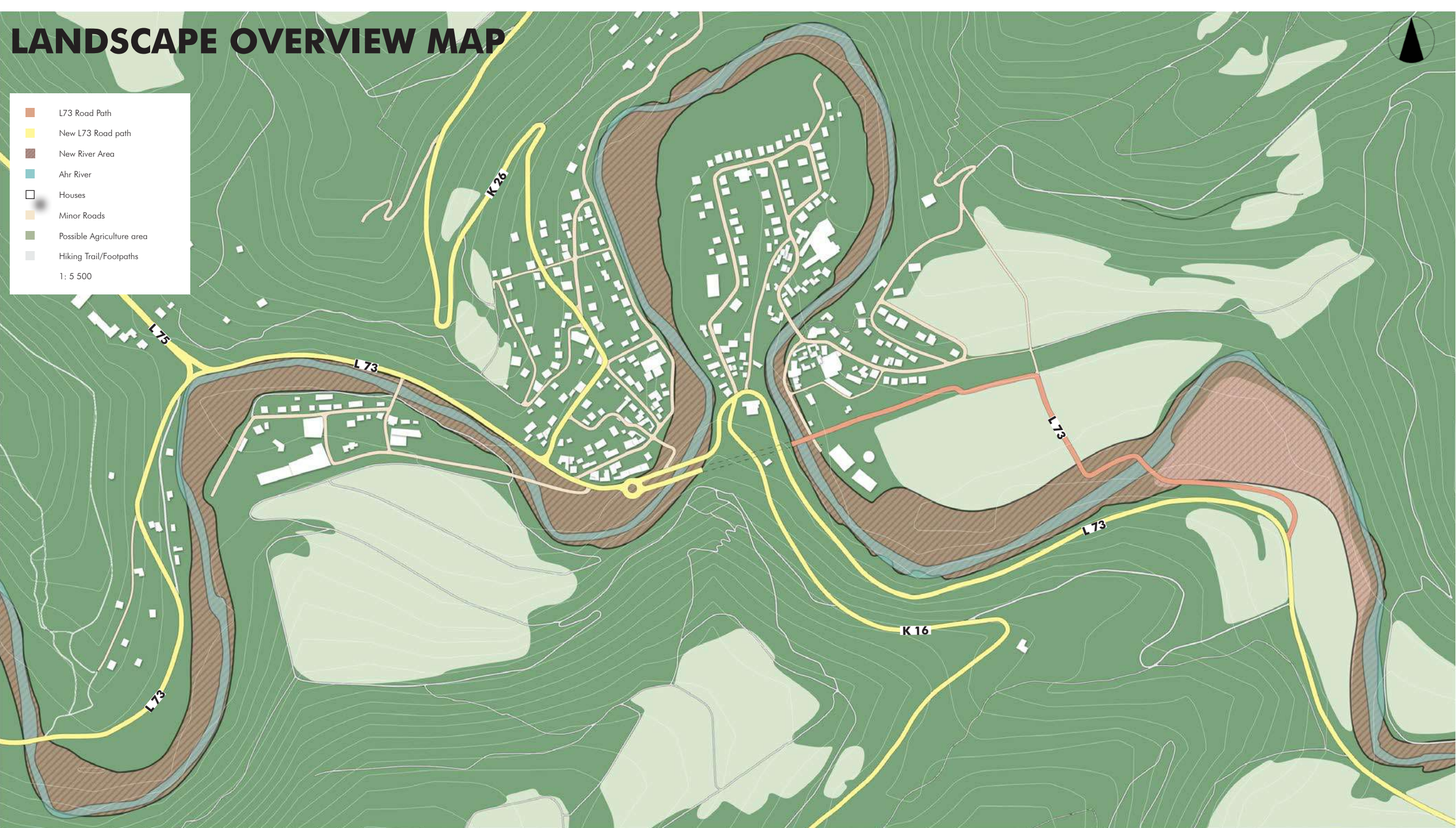
BAKERY



PIZZA BAKERY

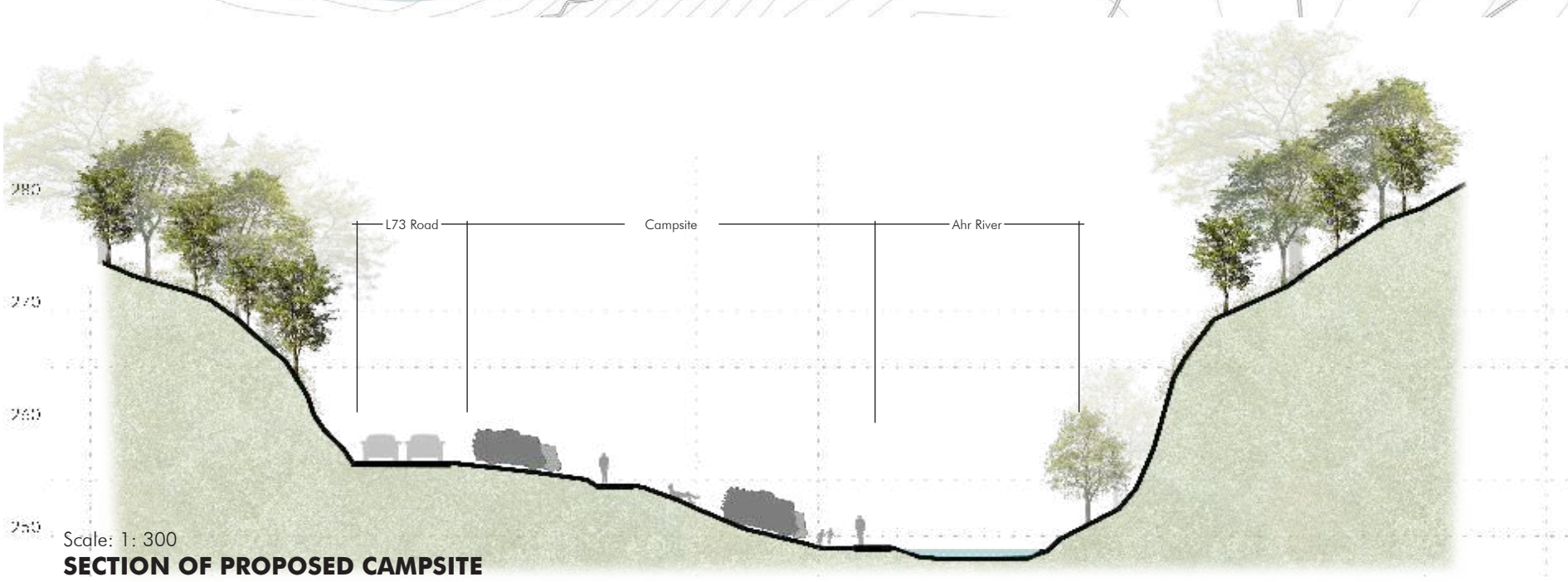
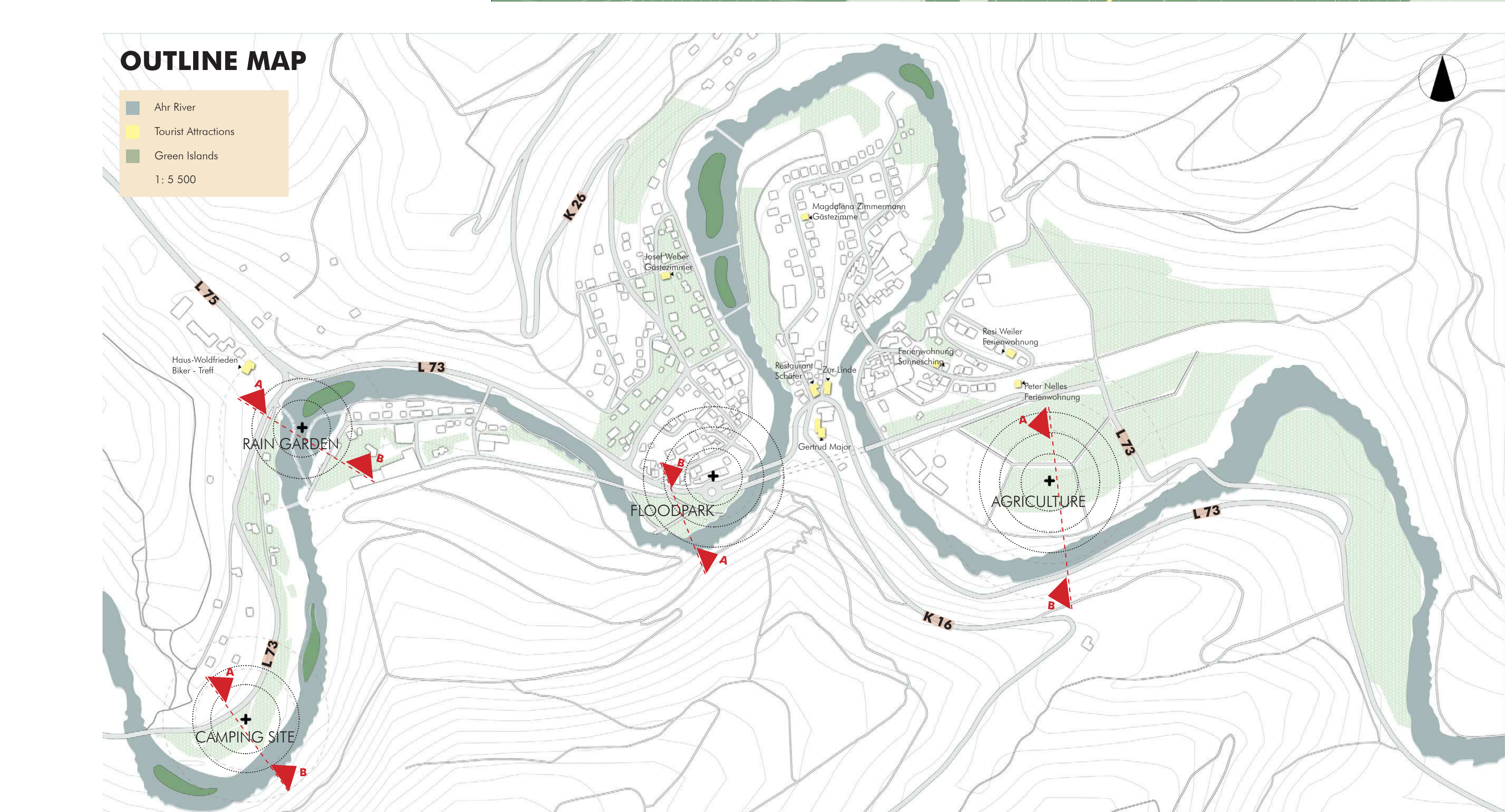
My concept coils around the idea of making space for the river to maneuver finding it's desired path, it is not enough to open up the area but having a larger river path and using that same river for various land use.

First using the 2021 flood map, i was able to map out the path and area i would want the river to occupy.

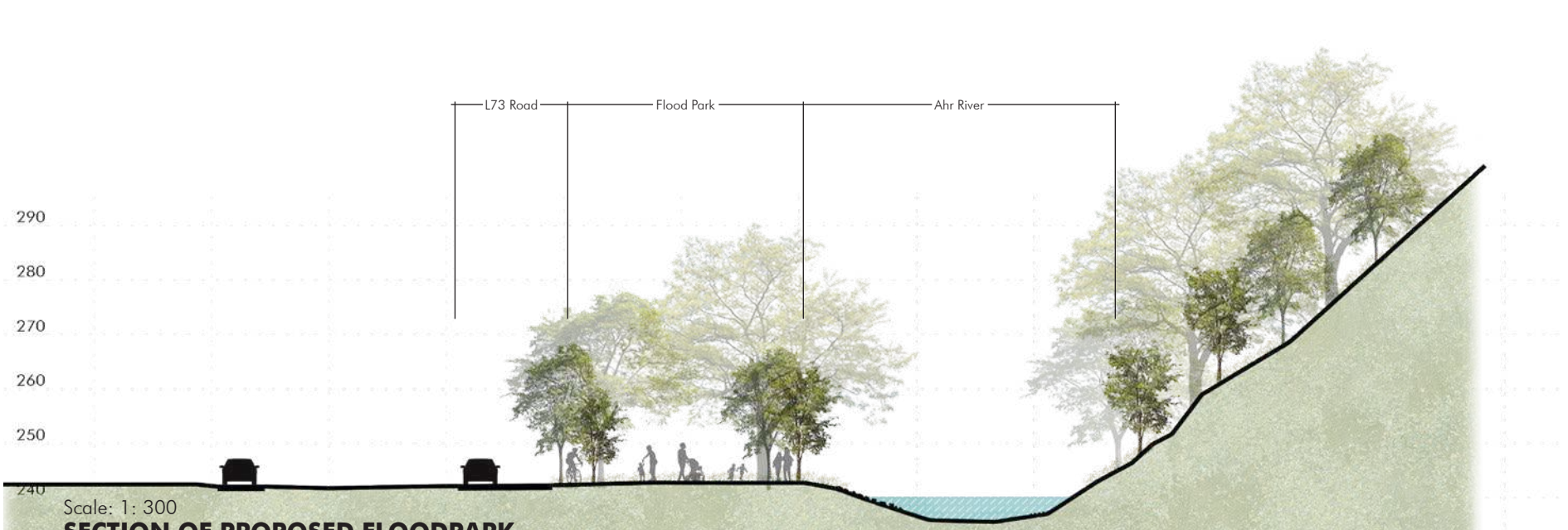


From the mapped out river path/area, i hlighted multiple land uses in certain areas along the river which would not divide the human interactions with the river after the flood.

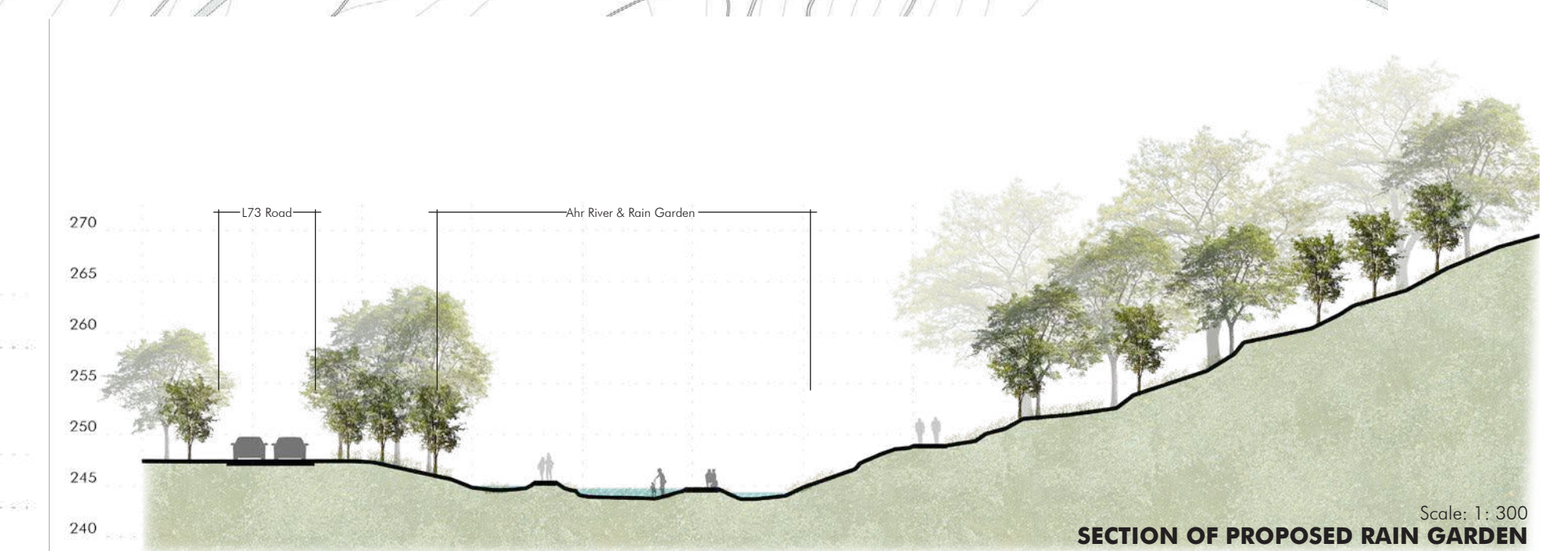
Over the course of the years there would be an erosion effect as the river finds it's way cause the green islands to change shape



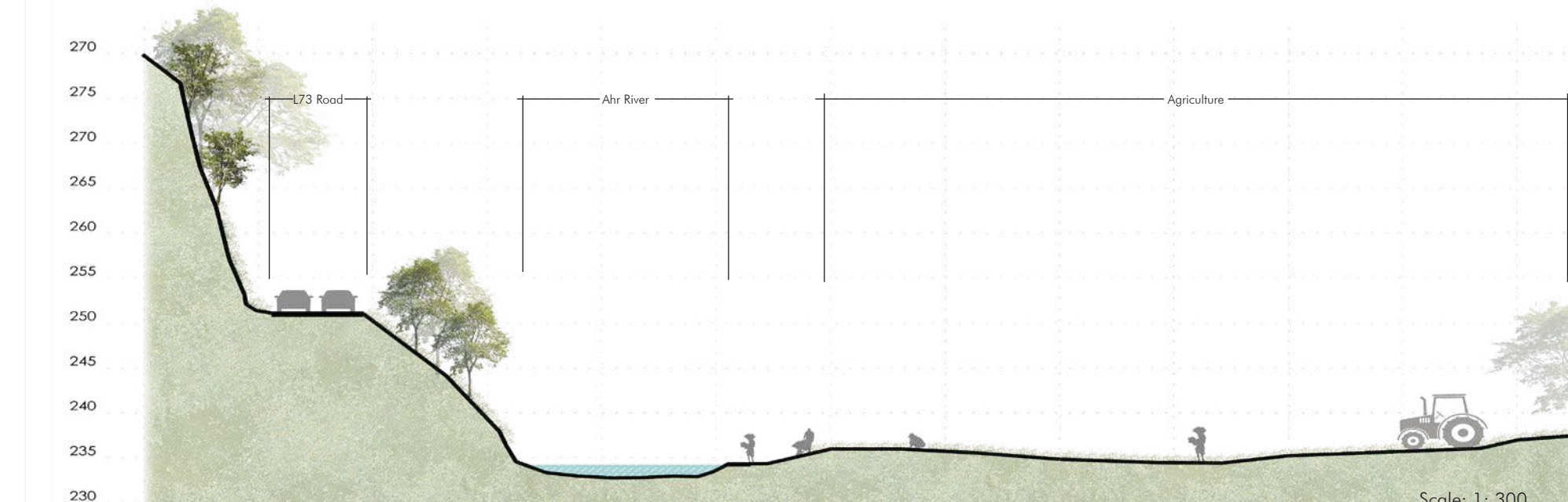
SECTION OF PROPOSED CAMPSITE
My first design proposal would still propose to rebuild the camping ground but this time with a wider river bank, with an open area before the camping space for recreation and other water related activities.



SECTION OF PROPOSED FLOODPARK
My third design element is for the engagement of the community and interaction with water i introduced a flood park. Various water related activities can be carried out.



SECTION OF PROPOSED RAIN GARDEN
Second design element is a rain garden. A river walk allows users to enjoy nature environment closer and at a slower pace.



SECTION OF PROPOSED AGRICULTURE AREA
My fourth and final design element is the use of agricultural land for farming and other production related activities. Development of a ducting system for the collection and distribution of water from the Ahr river to the land.

WHAT HAPPENED? WHAT HAPPENS? WHAT SHOULD HAPPEN?