

Appendix to
Annual report 2010
NOVA University Network

Additional tables and figures



Table of Contents

- 1. Statistics on NOVA PhD Courses 2002-2010 2
- 2. Statistics on MSc activities 5
- 3. NOVA financial data 2003-2010 9
- 4. Data on NOVA member institutions..... 10
- 5. NOVA members 2003-2010..... 12

1. Statistics on NOVA PhD Courses 2002-2010

Table 1. Number of NOVA PhD courses, total number of students, and average student number on NOVA PhD courses, 2002-2010.

	No of courses	Total no. of students	Students per course
2002	10	292	29
2003	17	402	24
2004	13	282	22
2005	16	366	23
2006	14	346	25
2007	14	355	25
2008	17	391	23
2009	19	382	20
2010	19	444	23

Comment

The number of courses is the same as previous year; however the total number of students has never been higher.

Table 2. Number of NOVA students in NOVA PhD courses (non-PhD students in brackets) per member, in total, and average per course, 2002-2010.

	AU-DJF	LIFE	HU-AF	HU-V	LBHI	UMB	NVH	SLU	UEF-F	NOVA total	NOVA PHD stud./course	NOVA PhD stud. %
2002		67 (19)	29 (7)	24 (6)	3 (1)	31 (6)	15 (4)	96 (23)	-	255 (66)	19	65
2003		45 (7)	62 (12)	17 (5)	2 (1)	61 (5)	17 (4)	106 (6)	-	310 (40)	16	67
2004		45 (2)	14 (2)	21 (0)	0 (0)	29 (0)	15 (2)	74 (6)	-	198 (12)	14	66
2005		32 (3)	36 (9)	19 (2)	0 (0)	28 (3)	8 (3)	63 (4)	-	186 (24)	10	44
2006		44 (3)	49 (11)	22 (0)	2 (0)	31 (2)	14 (4)	60 (2)	-	222 (22)	14	58
2007		40 (2)	36 (0)	10 (0)	1(1)	28 (0)	14 (2)	64 (1)	10 (0)*	203 (6)	14	55
2008		55 (4)	30 (4)	29 (3)	7 (2)	28 (5)	18 (0)	86 (3)	11 (0)	264 (21)	14	62
2009	18 (0)	47 (3)	27 (2)	19 (2)	3 (0)	52 (9)	27 (1)	91 (3)	17 (0)	301 (20)	16	74
2010	36 (1)	59 (4)	61 (3)	15 (0)	2 (4)	58 (3)	11 (0)	71 (2)	18 (0)	331 (17)	17	75

* UEF-F (JU-F) was not full member of NOVA 2007, but is included in the NOVA total.

** AU-DJF became full member from January 2009

Table 3. Non-NOVA participants on NOVA PhD courses 2002-2010

	Baltic	Other	Total non-NOVA	Percentage non-NOVA
2002	0	37	37	13%
2003	60	32	92	23%
2004	33	51	84	30%
2005	48	132	180	49%
2006	57	67	124	36%
2007	33	119	152	43%
2008	46	81	127	32%
2009	20	61	81	21%
2010	30	83	113	25%

Comment

The large number of participants from other than NOVA and/or Baltic universities in 2005 (132) is partly explained by the fact that NOVA supported two PhD courses with main funding from external donors (EU, NordForsk).

Table 4. Relative participation by member of NOVA students on NOVA PhD courses 2002-2010

	LIFE	HU-AF	HU-V	LBHI	UMB	NVH	SLU	UEF-F	AU-DJF
2002	25%	11%	9%	1%	12%	6%	36%		
2003	15%	20%	5%	1%	20%	5%	34%		
2004	23%	7%	11%	0%	15%	8%	37%		
2005	17%	19%	10%	0%	15%	4%	34%		
2006	20%	22%	10%	1%	14%	6%	27%		
2007	20%	18%	5%	0%	14%	7%	32%	5%	
2008	21%	11%	11%	3%	11%	7%	33%	4%	
2009	17%	10%	7%	1%	18%	10%	32%	6%	6%
2010	18%	18%	4%	2%	18%	3%	21%	5%	11%

Table 5. Relative student participation by member 2010 related to member fee 2010

	LIFE	HU-AF	HU-V	LBHI	UMB	NVH	SLU	UEF-F	AU-DJF
Share of participating NOVA students	18,0%	18,0%	4,0%	2,0%	18,0%	3,0%	21,0%	5,0%	11,0%
Member fee (Euro)	162.596	76.281	21.947	10.734	138.563	33.272	224.882	14.260	37.465
Share of member fee	22,58%	10,59%	3,05%	1,49%	19,24%	4,62%	31,23%	1,98%	5,20%
Share students / Share member fee	0,8	1,7	1,3	1,3	0,9	0,6	0,7	2,5	2,1

Comment on table 4 and 5

The relative student participation is based on all student groups (i.e. not only PhD students). Table 5 shows only figures for 2010.

Table 6. ECTS and NOVA funding reported during 2004 to 2010.

		2004	2005	2006	2007	2008	2009	2010
ECTS	NOVA PhD	940	707	803	808	860	1.094	1647
	NOVA Other	30	57	64	28	82	10	92
	Baltic	158	187	205	147	194	118	121
	Other non-NOVA	158	549	192	469	371	232	268
	Total	1.286	1.500	1.264	1.451	1.507	1.454	2.128
	Avg, total per course	99	94	90	104	88	77	93
NOVA funding		197.200	235.735	293.400	253.723	303.100	313.277	436.501
€ per ECTS	NOVA (PhD + Others)	203	308	338	304	322	284	251
	All	153	157	232	183	201	215	205
€ per course		15.169	14.733	20.957	18.123	17.829	20.885	18.978

Table 7. Number of NOVA students on Nordplus mobility per academic year 2002/03 -2008/10 in relation to all MSc students

	2002/03	2003/04	2004/05	2005/06	2006/07	2007/08	2008/09	2009/10
No.of students on Nordplus > 4 weeks	33	43	68	37	52	53	23	29
No. of students on Nordplus < 4 weeks	-	12	17	35	50	73	69	70
Number of MSc degrees*	1 152	1 485	1 487	1 435	1 650	1967	1533	1741
Appr. number of MSc students**	2 900	3 700	3 700	3 600	3 700	3900***	3833	4353
Total students on Nordplus mobility	33	55	85	72	102	126	92	99
Percentage of MSc stud in mobility	1.1%	1.5%	2.3%	2.0%	2.8%	3.2%	2,4%	2,6%

* Counted per calendar year i.e. 2002/03 corresponds to 2003.

** Assuming 80% examination rate, two times the annual number (e.g. $1152/0.8 * 2 = \text{appr. } 2900$)

*** For 2008 the unusual high number of degrees at HU-AF was due to changes in the degree structure normalized in the calculation of number of MSc students.

2. Statistics on MSc activities

The academic year of 2009/2010 was the first year of combined NOVA/BOVA Nordplus Network. Therefore matrixes show student mobility both for NOVA and BOVA students in tables 8 and 9.

Table 8. Matrixes of number of students in mobility >4 weeks (left column), and corresponding number of mobility months (right column) with Nordplus or NOVA funding 2002/03 – 2008/09.

Number of students		2002-2003								
		HU-AF	HU-V	NLH	NVH	SLU	LBHI	KVL	Others	
From	HU-AF			1		4			2	7
	HU-V									0
	UMB					2	4	4		10
	NVH									0
	SLU								3	4
	LBH								1	1
	KVL				4	1	5			1
		0	0	5	1	11	4	8	4	33

Number of months		2002-2003									
		HU-AF	HU-V	UMB	NVH	SLU	LBHI	KVL	Others		
From	HU-AF					5			23	15	43
	HU-V										0
	UMB							15	20	27	62
	NVH										0
	SLU									21	31
	LBH									10	10
	KVL				18	7	27			10	6
		0	0	23	7	65	20	58	31	204	

2003-2004		To								
		HU-AF	HU-V	UMB	NVH	SLU	LBHI	KVL	Others	
From	HU-AF					4		1	1	6
	HU-V									0
	UMB					2	1	11	5	19
	NVH		1					1		2
	SLU			2	2			3	3	10
	LBH									0
	KVL				1		4			1
		0	1	3	2	10	1	16	10	43

2003-2004		To								
		HU-AF	HU-V	UMB	NVH	SLU	LBHI	KVL	Others	
From	HU-AF					20		3	10	33
	HU-V									0
	UMB					13	5	80	44	142
	NVH		6					3		9
	SLU			9	6			18	12	45
	LBH									0
	KVL				5		19			6
		0	6	14	6	52	5	104	72	259

2004-2005		To									
		HU-AF	HU-V	UMB	NVH	SLU	LBHI	KVL	Others		
From	HU-AF			2		8		7		17	
	HU-V				1	1		2		4	
	UMB					5	4	10	4	23	
	NVH					1		1		2	
	SLU		1		3				2	4	10
	LBH						1			1	
	KVL				2		8			1	11
		1	0	7	1	24	4	22	9	68	

2004-2005		To									
		HU-AF	HU-V	UMB	NVH	SLU	LBHI	KVL	Others		
From	HU-AF			10		31		23		64	
	HU-V				1	9		9		19	
	UMB					27	18	53	20	118	
	NVH					2		2		4	
	SLU		3		18				17	18	56
	LBH						2			1	
	KVL				9		65			5	79
		3	0	37	1	136	18	104	48	342	

2005-2006		To								
		HU-AF	HU-V	UMB	NVH	SLU	LBHI	KVL	Others	
From	HU-AF			2		5		1		8
	HU-V					1				1
	UMB					5		9		14
	NVH					1				1
	SLU			2				4		6
	LBH									0
	KVL			3	3	1				7
		7	3	13	0	14	0	14	0	37

2005-2006		To								
		HU-AF	HU-V	UMB	NVH	SLU	LBHI	KVL	Others	
From	HU-AF			14		17		4		35
	HU-V									0
	UMB					40		74		114
	NVH					3				3
	SLU			20				30		50
	LBH									0
	KVL			19	12	6				37
		53	12	66	0	108	0	108	0	239

2006-2007		To								
		HU-AF	HU-V	UMB	NVH	SLU	LBHI	LIFE	Others	
From	HU-AF					3		7		10
	HU-V					2		1		3
	UMB					3		11		14
	NVH									0
	SLU			1	2			11	1	15
	LBH					5		1		6
	KVL		1		2	1				4
		1	0	1	4	14	0	31	1	52

2006-2007		To								
		HU-AF	HU-V	UMB	NVH	SLU	LBHI	LIFE	Others	
From	HU-AF					15		7		22
	HU-V					14		2		16
	UMB					6		52		58
	NVH									0
	SLU			4	2			63	6	75
	LBH					27		6		33
	KVL		4		2	2				8
		4	0	4	4	64	0	130	6	212

2007-2008		To								
		HU-AF	HU-V	UMB	NVH	SLU	LBHI	LIFE	Others	
From	HU-AF					19		2		21
	HU-V					4				4
	UMB							11		11
	NVH									0
	SLU				3			7		10
	LBH			2						2
	LIFE			2		2				4
		0	0	4	3	26	0	20	0	53

2007-2008		To								
		HU-AF	HU-V	UMB	NVH	SLU	LBHI	LIFE	Others	
From	HU-AF					97		18		115
	HU-V					31				31
	UMB							60		60
	NVH									0
	SLU				4			35		39
	LBH			10			9			19
	LIFE			10			8			18
		0	0	20	4	145	0	113	0	282

Table 8 Matrixes of number of students in mobility >4 weeks continued

Number of students 2008-2009

	HU-AF	HU-V	UMB	NHV	SLU	LBHI	LIFE	UEF-F	AU-DJF	Others	
From HU-AF					5		2				7
HU-V					2						2
UMB					2				1		3
NHV					1		1				2
SLU			1			1	4				6
LBHI			1								1
LIFE			1								1
UEF-F											0
AU-DJF											0
	0	0	3	0	10	1	7	0	1	0	22

Number of months 2008-2009

	HU-AF	HU-V	UMB	NHV	SLU	LBHI	LIFE	UEF-F	AU-DJF	Others	
From HU-AF					19		11				30
HU-V					18						18
UMB					9				6		15
NHV					5		1				6
SLU			3			8	21				32
LBHI			10								10
LIFE			12								12
UEF-F											0
AU-DJF											0
	0	0	25	0	51	8	33	0	6	0	123

Number of students 2009-2010 NORMAL MOBILITY

	HU-AF	HU-V	UMB	NHV	SLU	LBHI	LIFE	UEF-FAU-DJF	LVA	LLU	EMU	LZUU	
From HU-AF			1		3		4						8
HU-V				2	1								3
UMB					1		1						2
NHV		1											1
SLU	4		1				3						8
LBHI			3		1								4
LIFE	1				2								3
UEF-F													0
AU-DJF													0
LVA		1					1						2
LLU													0
EMU					1								1
LZUU													0
	5	2	5	2	9	0	9	0	0	0	0	0	32

Number of months 2009-2010

	HU-AF	HU-V	UMB	NHV	SLU	LBHI	LIFE	UEF-FAU-DJF	LVA	LLU	EMU	LZUU	
From HU-AF			4		18		21						43
HU-V				2	2								4
UMB					4		5						9
NHV		2											2
SLU	19		10				11						40
LBHI			18		10								28
LIFE	2				11								13
UEF-F													0
AU-DJF													0
LVA		1					1						2
LLU													0
EMU					10								10
LZUU													0
	21	3	32	2	55	0	38	0	0	0	0	0	151

Comment

No BOVA students participated in normal mobility (> 4 weeks)

Table 9. Matrixes of NOVA students in mobility <4 weeks 2004/05-2009/10.

2004-2005		To							
		HU-AF	HU-V	UMB	NVH	SLU	LBHI	KVL	
From	HU-AF					7			7
	HU-V								
	UMB							2	2
	NVH								
	SLU								
	LBH								
	KVL				1	7			8
				1	7	7		2	17

2005-2006		To							
		HU-AF	HU-V	UMB	NVH	SLU	LBHI	KVL	
From	HU-AF					10			10
	HU-V								
	UMB								
	NVH								
	SLU								
	LBH								
	KVL				17	8			25
					17	18			35

2006-2007		To								
		HU-AF	HU-V	UMB	NVH	SLU	LBHI	LIFE		
From	HU-AF					1		4	5	
	HU-V				3				5	
	UMB							15	15	
	NVH							8	8	
	SLU		7		6				13	
	LBH									
	LIFE					4			4	
			7		14	1		28	50	

2007-2008		To								
		HU-AF	HU-V	UMB	NVH	SLU	LBHI	LIFE		
From	HU-AF					4			4	
	HU-V				3	3			6	
	UMB					5	25		30	
	NVH					3	0		3	
	SLU						3		3	
	LBHI					3			3	
	LIFE		7	1		4	12		24	
			7		1	3	22	40	0	73

Number of students 2008-2009

		HU-AF	HU-V	UMB	NVH	SLU	LBHI	LIFE	UEF-F	AU-DJF	Others
From	HU-AF					1		3		1	5
	HU-V				3						3
	UMB	5				14		6			25
	NVH					4					4
	SLU	5			5			3			13
	LBHI										0
	LIFE	4			1	14					19
	UEF-F										0
	AU-DJF										0
			14	0	0	9	33	0	12	0	1

Table 9 Matrixes of NOVA Students in mobility < 4 weeks continued

Number of students 2009-2010 EXPRESS MOBILITY

	HU-AF	HU-V	UMB	NHV	SLU	LBHI	LIFE	UEF-FAU-DJF	LVA	LLU	EMU	LZUU		
From														
HU-AF			1		1	1	1			1	2		7	
HU-V					3								3	
UMB					5	6	16						27	
NHV							1						1	
SLU						6		1		6			13	
LBHI					3								3	
LIFE				1	3	2							6	
UEF-F										5	5		10	
AU-DJF													0	
LVA										6			6	
LLU											1	10	11	
EMU			2							7		5	14	
LZUU										6	3		9	
	0	2	1	1	15	15	18	0	1	0	31	4	22	110

Comment

The total of 53 NOVA students participated in express mobility (< 4 weeks) and 57 BOVA students.

Table 10. NOVA projects grant amounts by category 2003-2010, PhD courses not included (€).

Type of project	2003	2004	2005	2006	2007	2008	2009	2010
Planning grants	21.673	38.921	36.493	31.432	20.250	18.000	23.210	33.227
Network projects	76.785	148.795	168.420	85.253	73.500	32.130	27.353	17.117
Mobility/NIMCs		6.000	40.000	40.588	68.077	76.108	73.285	31.024
Other (2008 Erasmus)	26.490	37.312	15.100	3.927		29.515	14.000	0
NOVA prize	3.000	4.000	0	4.000	5.000	5.000	5.000	5.000
Total	122 386	265 063	229 741	160 766	165 214	160 753	142.848	86.368

3. NOVA financial data 2003-2010

Table 11. Annual profit-and-loss reports 2003-2010 (€).

	2003	2004	2005	2006	2007	2008	2009	2010
Member fees	526 144	821 329	749 607	736 282	698 555	665 000	547.968	720.000
University V.A.T ¹⁾		-12 623	-16 925	-20 562				
Nordic Council of Ministe		46 638	91 133	10 824		58 787	28.500	
Other external funding			258 000	298 604	220 040	12 000	8.000	72.000
Total funding	526 145	856 589	1 081 815	1 025 148	918 595	735 787	584.468	792.000
Activities								
PhD courses	-306 007	-291 804	-304 484	-307 251	-309 454	-433 992	-422.482	-526.677
Projects and mobility	-122 386	-229 741	-265 063	-160 766	-165 214	-160 753	-142.848	-145.299
Other externally funded projects			-258 000	-298 604	-220 040	-70 787	-28.500	-72.000
Internal secretariat ²⁾	-135 714	-117 406	-109 315	-117 327	-29 512			
web		-16 121	-9 768	-6 292				
NSB	-20 000	-12 637	-13 382	-22 203	-11 276	-15 362	-17.838	-21.671
Annual seminar			-24 505	-33 698	-11 033	-18 316	-25.000	-22.392
Jub. book/ Evaluation			-12 596	-19 400				
Total activities	-562 680	-667 709	-997 113	-965 542	-746 632	-699 210	-636.668	-788.039
Regained funding	13 054	105 650	126 168	86 408	45 253	55 732	81.459	130.433
Secretariat								
Salary	-156 081	-170 144	-166 290	-171 937	-56 233	-66 161	-54.912	-66.624
Project administration						-14 225 ²⁾		
Travels	-11 842	-12 524	-10 561	-12 639	-7 496	-5 488	-5.089	-9.613
Other	-15 264	-34 176	-27 912	-28 203	-11 344	-9468	-14.058	-15.000
Total secretariat	-183 187	-218 161	-204 763	-212 780	-63 426	-95 342²⁾	-74.059	-91.237
Total activities & secret:	-732 813	-790 086	-1 075 708	-1 091 914	-764 804	-738 820	-629.268	-748.844
Result before currency :					153 790	-3 033	-44.800	43.156
Currency loss/gain					-3 247	-48 505	24.053	
Internal interest					11 670	21 530	4.340	1.548
Result	-206 668	66 503	6 107	-66 766	150 544	-30 008	-30.818	44.704

1. Fee to the Swedish state budget, 8% on all external funding (Nordic Council of Ministers excluded) used at SLU.
2. For 2008 none of the secretariat's costs are accounted below "Activities". Thus, the amount in "Total secretariat" 2008 is not directly comparable to previous years.
3. Funds set aside previous years, but unused by the projects and regained.
4. Accounting is done in EUR and no currency loss is accounted

Comment on data 2010

At Board meeting 57 allocated funding for PhD courses was raised from 450.000 to 600.000 €. Regained is based on 31 reported projects, whereof 15 are PhD courses. In addition was one PhD course cancelled (44.777 €) in 2010.

4. Data on NOVA member institutions

Table 12. Financial data, 2010, million Euro

	AU-DJF	HU-AF	HU-V	LBHI	LIFE	NVH	SLU	UEF-F	UMB
INCOME									
Government funding	43,8	27,2	16,6	4,8	128,1	34,2	176,3	3,6	88,2
Profit earnings income	1,6	1,7	6,4	0,8	5,1	6,1	55,7		15,3
External funds	45,3	11,8	4,6	0,7	64,0	9,4	82,5	3,0	18,7
Other	12,9	0,1		0,5			0,6		7,0
TOTAL	103,7	40,8	27,6	6,9	197,2	49,7	315,1	6,6	129,2
% gov of total	42%	67%	60%	70%	65%	69%	56%	55%	68%
EXPENSES									
Salary	54,0	25,2	16,5	3,9	124,5	32,1	194,7	3,9	81,7
Running costs	34,0	6,5	6,6	2,3	71,1	17,5	85,5	1,9	46,5
Rent	12,3	8,8	4,5	0,6	2,4	7,0	31,3	0,7	0,0
TOTAL	100,4	40,5	27,6	6,8	197,9	49,6	311,5	6,6	128,2
% salary of total	54%	62%	60%	57%	63%	65%	63%	60%	64%

Table 13. Number of ECTS, full-time student equivalents (FTSE) and degrees, 2010.

Member	BSc/MSc			Degrees		PhD students	
	Number of ECTS	Numb of FTSE*	MSc	BSc	Tot	Registered	Degrees
AU-DJF	3.825	63	6	0	6	197	5
HU-AF	79.805	1330	216	248	464	476	30
HU-V	23.566	418	68	58	126	79	14
LBHI	10.610	177	6	47	53	5	1
LIFE	121.950	2032	392	373	765	660	75
NVH	23.482	391	67	20	87	124	17
SLU	239.220	3987	423	384	807	729	98
UEF-F	11.040	184	63	78	141	72	3
UMB	160.236	3812	500	183	683	467	58
<i>Total</i>	<i>673734</i>	<i>12394</i>	<i>1741</i>	<i>1391</i>	<i>3132</i>	<i>2809</i>	<i>301</i>

* One FTSE is equivalent to 60 ECTS.

Table 14. Number of employees; academic, technical/administrative and total, 2010

Member	Academ.	Techn./Adm.	Total
AU-DJF	387	488	875
HU-AF	356	163	519
HU-V	180	226	406
LBHI	32	69	101
LIFE	1.063	940	2.003
NVH	208	233	441
SLU	1.031	1.419	2.450
UEF-F	47	30	77
UMB	668	480	1.148
<i>Total</i>	<i>3.585</i>	<i>3.560</i>	<i>7.145</i>

Table 15. Key numbers on NOVA member institutions, 2010.

Member	Tot. income per employee k€	Tot. income per FTSE* k€	FTSE* per academic empl.	External funding per employee kEuro	Share of total income %	Share of total FTSE* %
AU-DJF	119	1627	0	52	11,8%	2%
HU-AF	79	31	4	23	4,7%	11%
HU-V	68	66	2	11	3,1%	3%
LBHI	70	39	6	7	0,8%	1%
LIFE	98	97	2	32	22,5%	16%
NVH	112	127	2	16	5,7%	3%
SLU	129	79	4	34	35,9%	32%
UEF-F	86	36	4	39	0,8%	1%
UMB	113	34	6	16	14,7%	31%
<i>Average</i>	<i>97</i>	<i>237</i>	<i>3</i>	<i>26</i>		

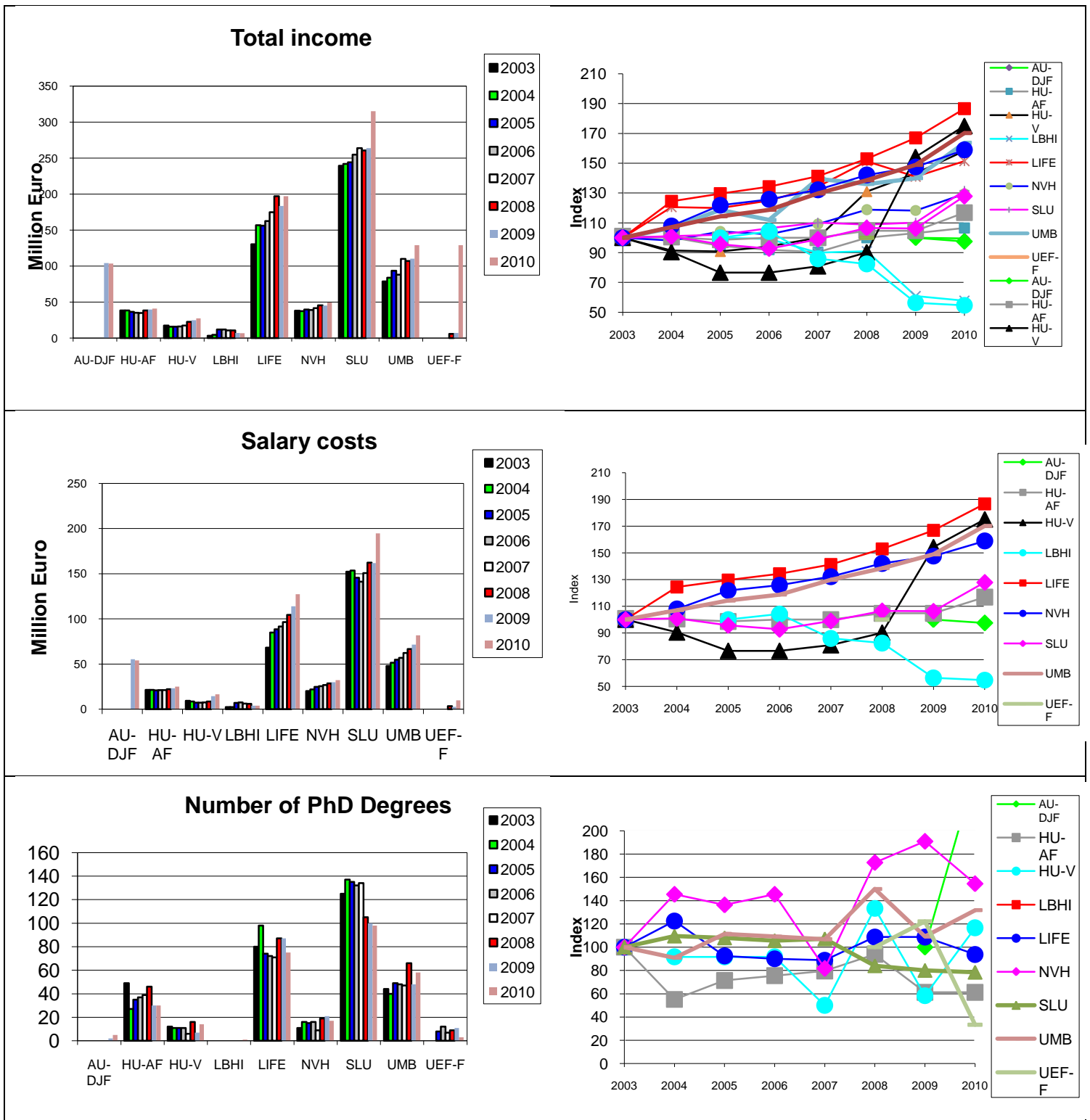
* FTSE - Full Time Student Equivalent (60 ECTS)

Comment

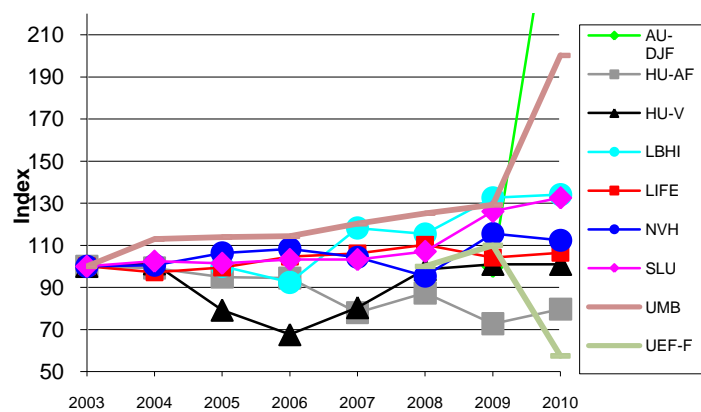
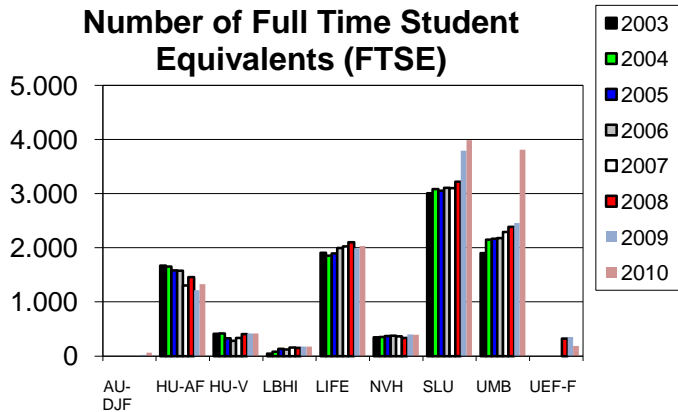
Due to organisational changes AU-DJF reports relatively few Full Time Student Equivalents, resulting in high total income per FTSE

5. NOVA members 2003-2010

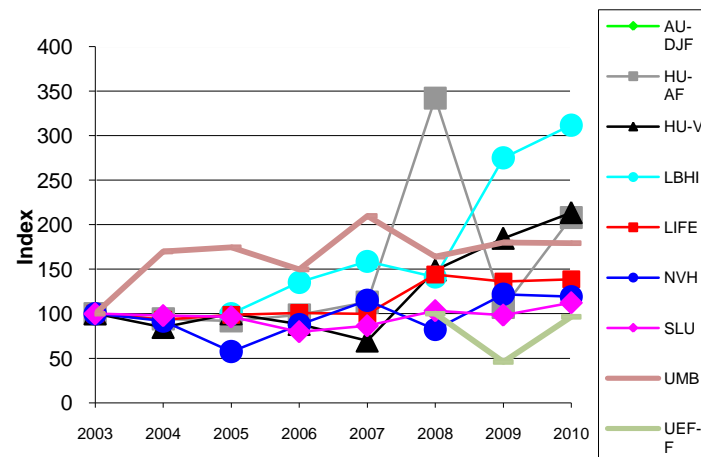
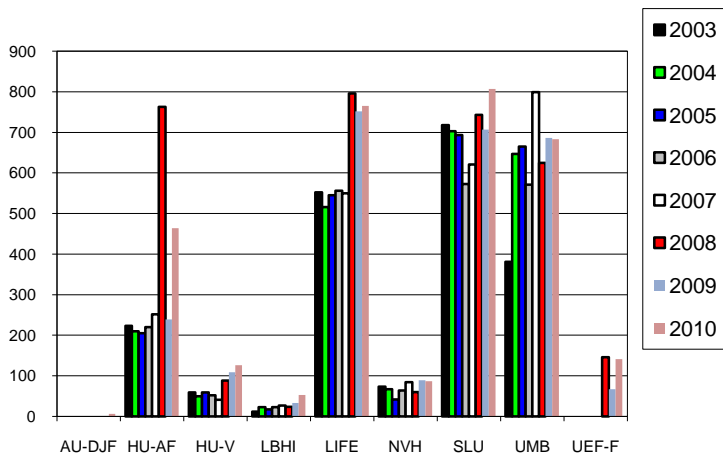
The following figures are based on data on the member institutions 2003-2010. The index figures in the right hand column are based on 2003 as index 100 except for; LBHI where, due to major organisational changes 2004, index 100 corresponds to 2005, UEF-F (JU-F) were index 100 corresponds to 2008 and AU-DJF where 100 corresponds to 2009.



Number of Full Time Student Equivalents (FTSE)



Number of BSc and MSc degrees



Number of employees

