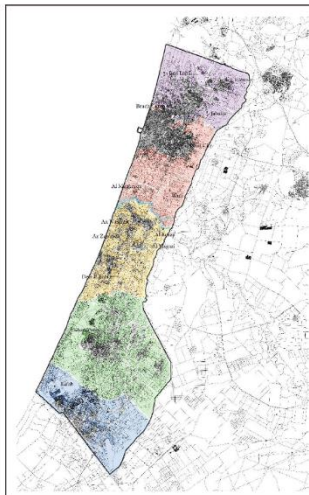
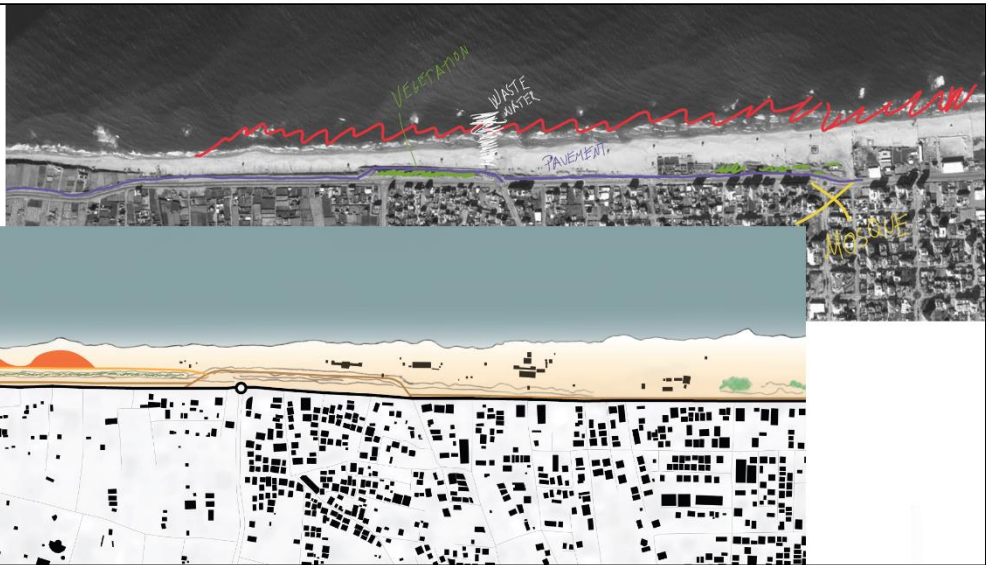


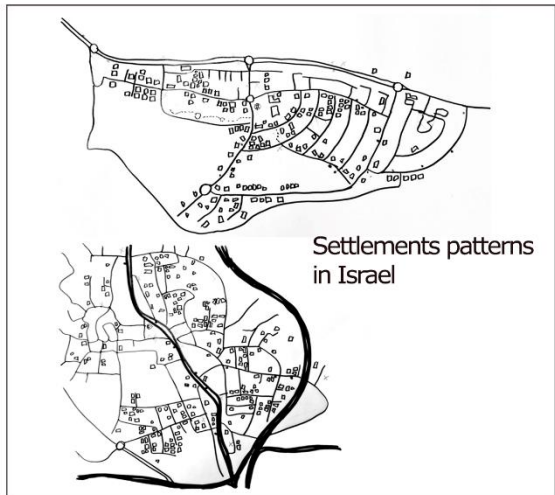
## **GLA302 Analysis and design of contested landscapes I**

The topic of GLA302 'Analysis and design of contested landscape I' in autumn 2020 was migration. The students were challenged to develop a project taking the departure in the question of what landscape architects can contribute to the qualitative and functional improvement of public spaces with a special focus on migrants. How can landscape architects contribute to the provision of feeling safe, welcome and home for migrants? The results were to be presented as two A0 posters. The selection below shows elements from the posters, reflecting both process and outcome, and illustrate the different ways students have been working in terms of style and scale. The material was produced by: Molly Andrews, Diana Hernández Aguilar, Martin Lucas Sortland Eick, Ingeborg Fjeldberg, Guilherme Amorim Improtá, Arash Parsian Nezhad, Trygve Ellef Lind and Kristin Lee Pedersen

Analysis of the coast of Gaza: Identifying its recreational potential



Sustainability visions for Gaza



Settlements patterns in Israel

10 Hectars  
2500/hectar  
25,000 Plants

From 300 kg  
To 3,000 kg

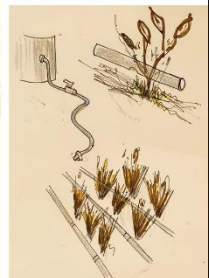
Price/kg = 6-8 \$

After 3 years of greening the yield will be 300% and it will grow to 3000 by the 10<sup>th</sup> year.

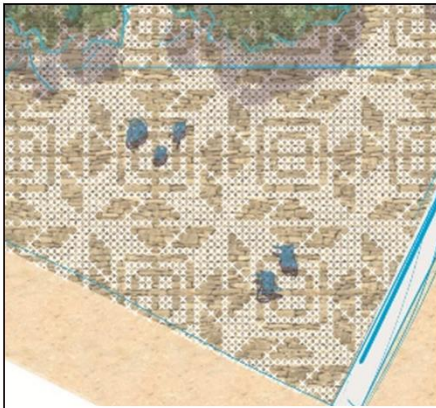
**Jojoba Plant**

In the initial phase, only seed sales are considered.  
In the expansion phase, establishment of a lubrication plant and the sale of the ready-to-market product is considered.

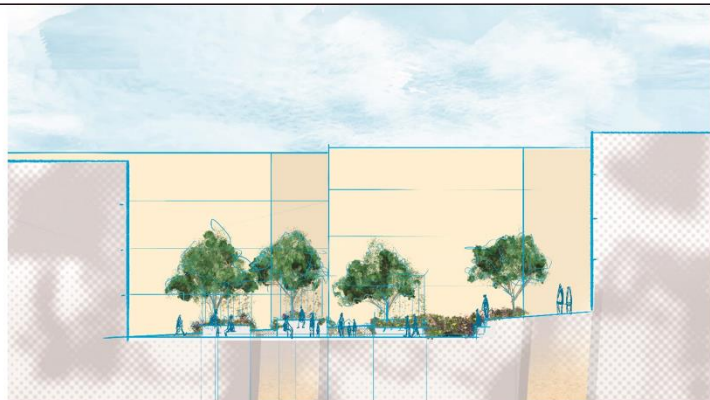
Desert farming in Iran



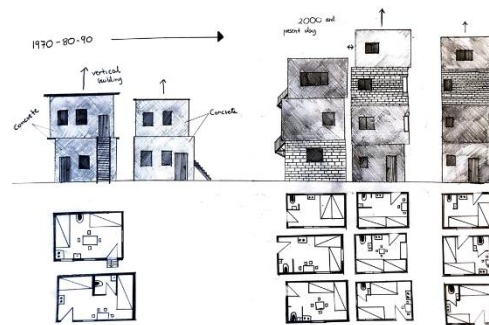
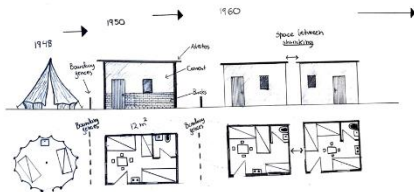
A place to belong for refugees in Lebanon



Space for culture in a Lebanese refugee camp



Analysing the evolution of building structures in a Lebanese refugee camp



Analysis of what constitutes a camp

