

# NSD

NORSK SENTER FOR  
FORSKNINGSDATA

*www.nsd.no*

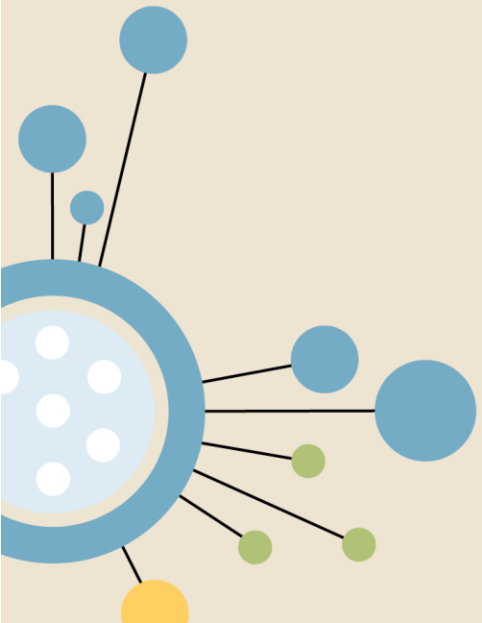


@nsddata

# Datamanagement and datamanagementplan (DMP)

Gry Henriksen

NMBU 27.10.2020



# Basic concepts

- Research data
- Data management
- Metadata
- DMP – datamangementplan
- Data lifecycle
- Storing
- Archiving
- FAIR principles



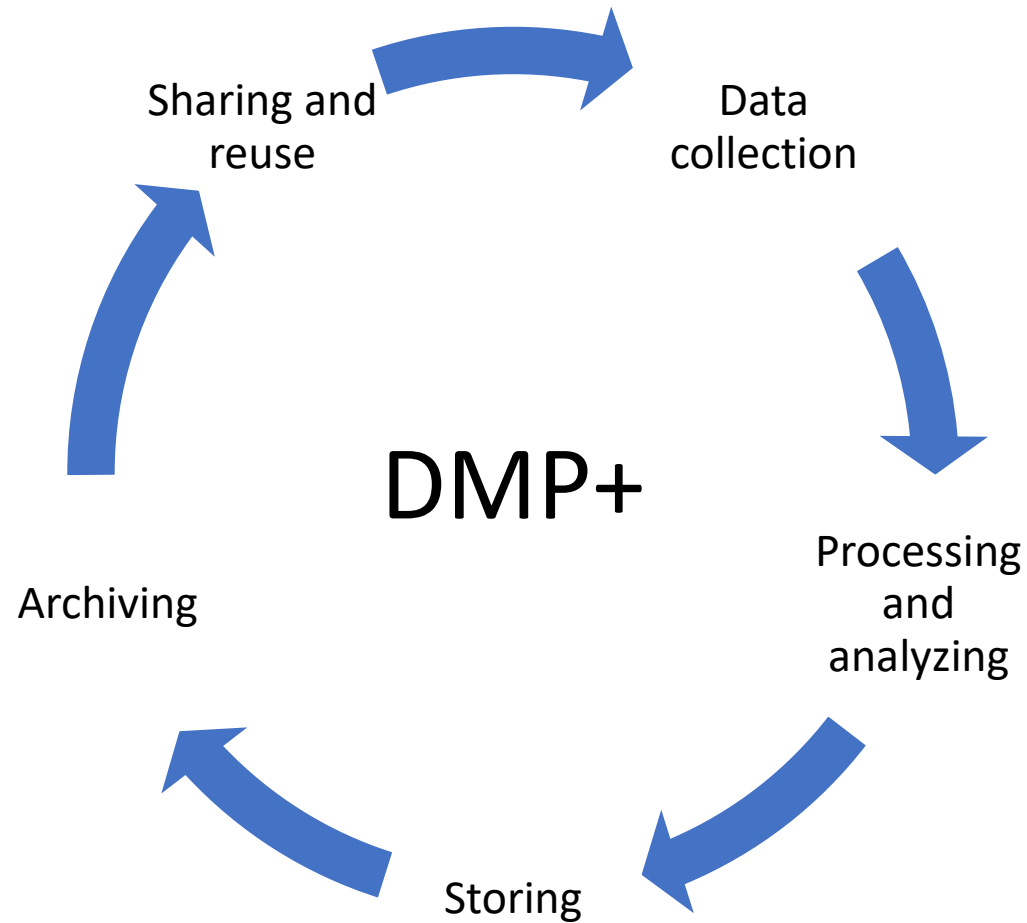
[search.creativecommons.org/](https://search.creativecommons.org/); [future.agenda/](https://future.agenda/)CC BY-NC-SA 2.0



# Why make a DMP?

**REQUIRED**

# What's in it for you



# FAIR - prinsippene



Forskning så åpen som mulig,  
så lukket som nødvendig

# NSD DMP+

- Meets requirements (NFR, H2020 ++)
- Online
- No attachments
- English/Norwegian
- Dynamic
- Sharable
- Exportable
- Many types of data
- Easy archiving
- Part of NMBUs documentation and overview



# Min side

## For researchers:

- Projects
- Other NSD services
- Archived data
- Data access
- Supervisors- shared projects
- Easy archiving

## For administrations:

- Easy overview
- Documentation
- Easy access

NSD NORSK SENTER FOR FORSKNINGSDATA

English ▾ Gry-Hege Henriksen ▾

Projects

Mine Shared


+ New project

Name	Created	Created by	Shared	DMP	Notification Form	Data orders
<a href="#">Fedme og overvekt blant barn og ungdom i Europa</a>	29.11.2018	Trond Kvamme	9	0		
<a href="#">ACCESS Life Course - Upgrade &amp; Expansion</a>	12.10.2018	Marijke Veenstra	2	1		

[Data archiving 06.12.2017](#)


[Data archiving 29.11.2017](#)

Services for researchers and students




Notification Form

Notify processing of personal data




Data management

Create a data management plans in line with requirements of The Research Council of Norway, the EU etc.



Archive data


NSD offers long-term storage and visibility of research data



Access to data


Overview of your approved data applications

Services for research institutions




Project archive

Projects notified to NSD that process personal data




DMP overview

Providing institutions with a comprehensive overview of



Data archiving

Overview of data archived by researchers at your institution



User admin

Administer users

NSD  
NORSK SENTER FOR  
FORSKNINGSDATA



# Take us take a look at the NSD DMP+...

---

Log in

to continue to Datahåndteringsplan...

Log in with Feide/eduGAIN

Log in with Google

[Log in with username/password](#)

---

[Personvern og brukerbetingelser](#)

Don't have an account on any of these providers? [Create one here.](#)

[? Help](#)

# Case 1.

You are a supervisor for 4 master students. They are all collecting their own data. Why will it be a good thing for you as a supervisor that they make a data management plan?

Do you have any responsibility regarding their collected data?

# Case 2.

What is the most important element of a DMP?

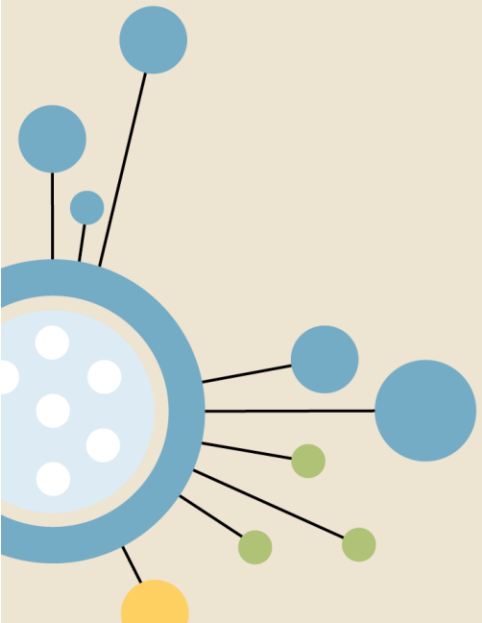
for:

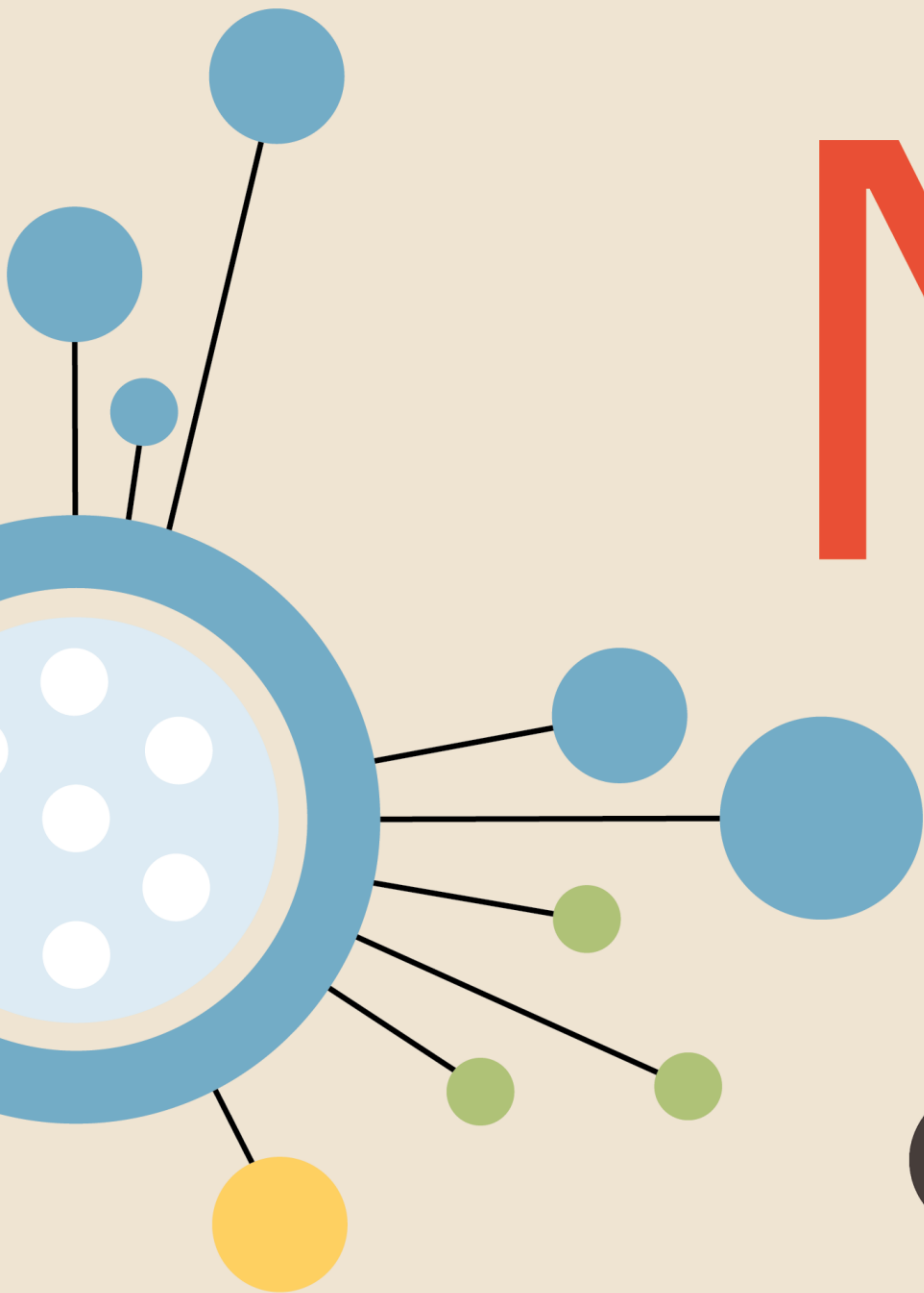
- Students
- Supervisors
- Research administration
- Institutions

# Thank you for your attention!

Gry Henriksen

[nsd@nsd.no](mailto:nsd@nsd.no)





# NSD

NORSK SENTER FOR  
FORSKNINGSDATA

*www.nsd.no*



@nsddata