



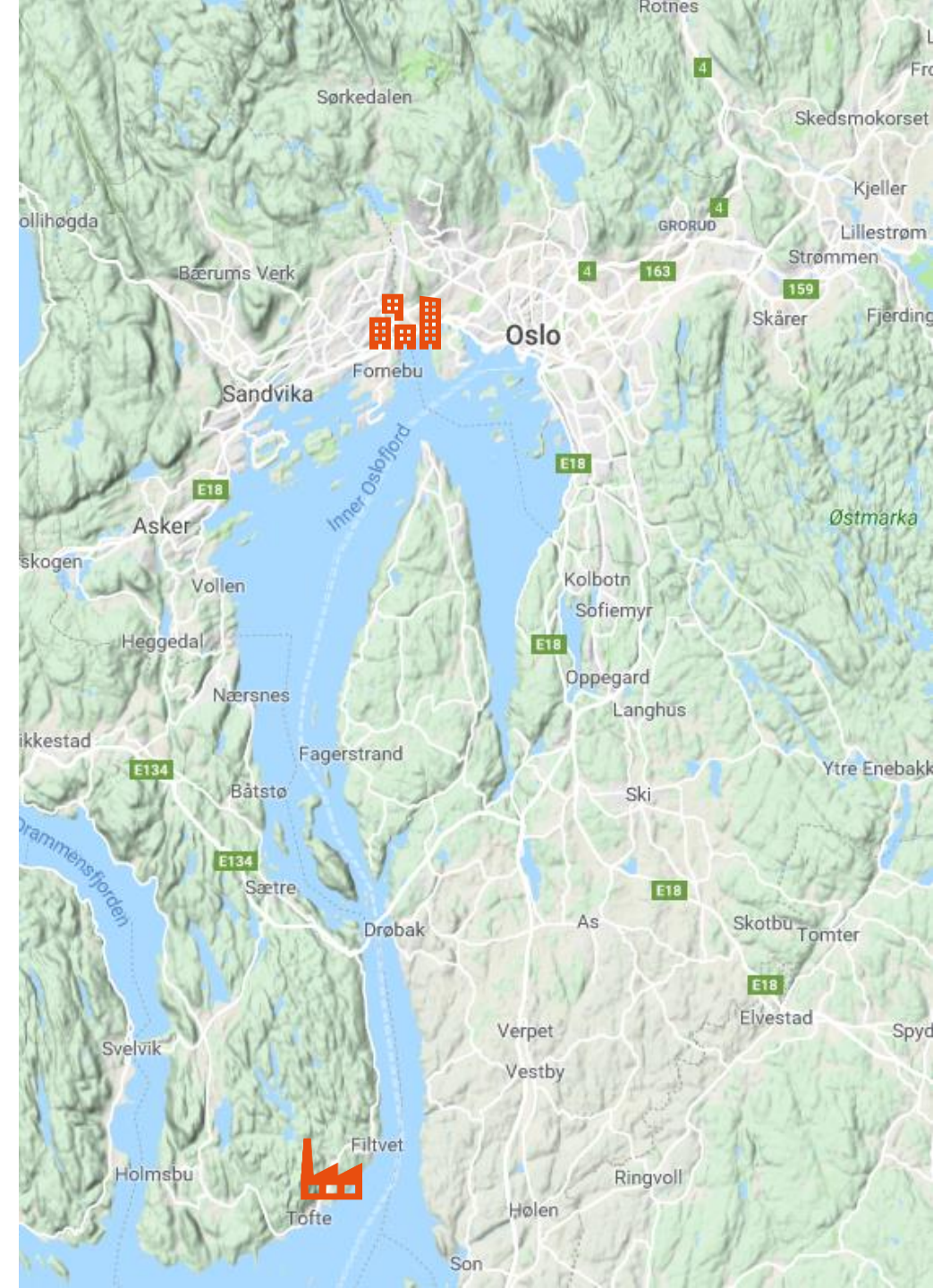
Virtual plant tour

INGO MACHENBACH
18 NOVEMBER 2020



General project information

- Hydrothermal liquefaction demonstration plant
- Conversion of biomass to biocrude oil
- Size of plant:
 - Feed: 24 t/d (50% moisture)
 - Product: 30 bbl/d
- Technology developer: Steeper Energy
- Location: Tofte
- Engineering: AFRY / Technology suppliers





HTL demonstration
plant

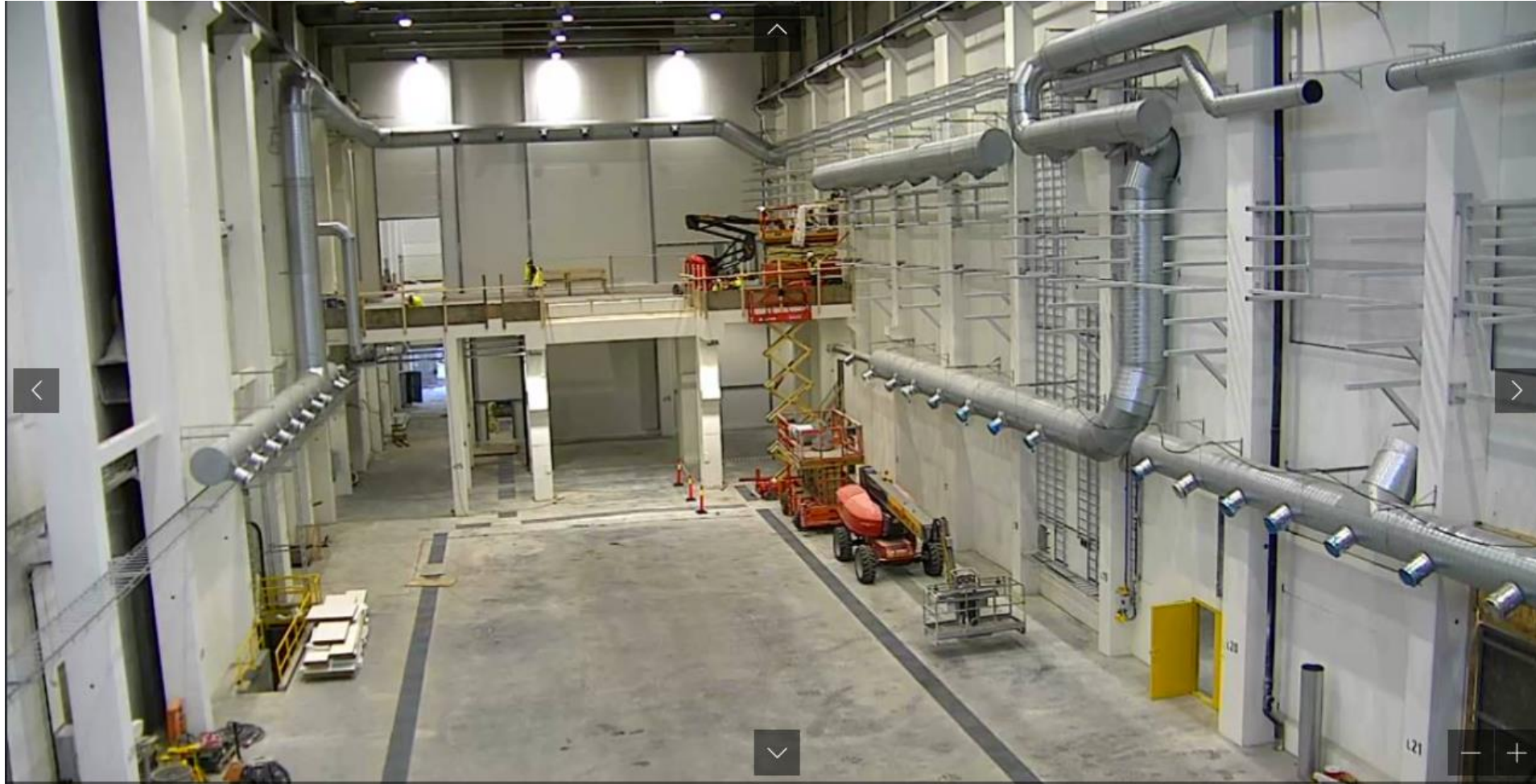
View of building from north side



Building December 2019



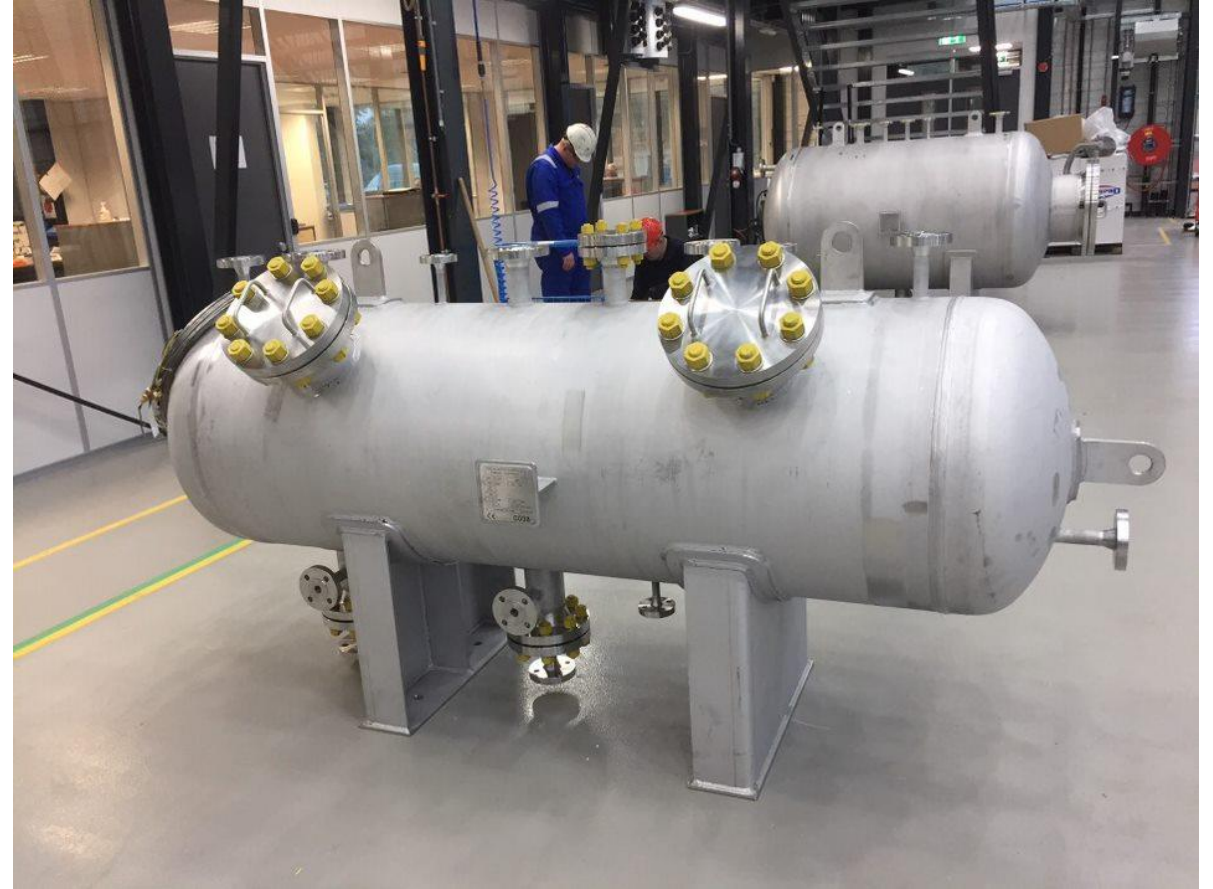
Building October 2020



Building June 2021



Installation and fabrication ongoing

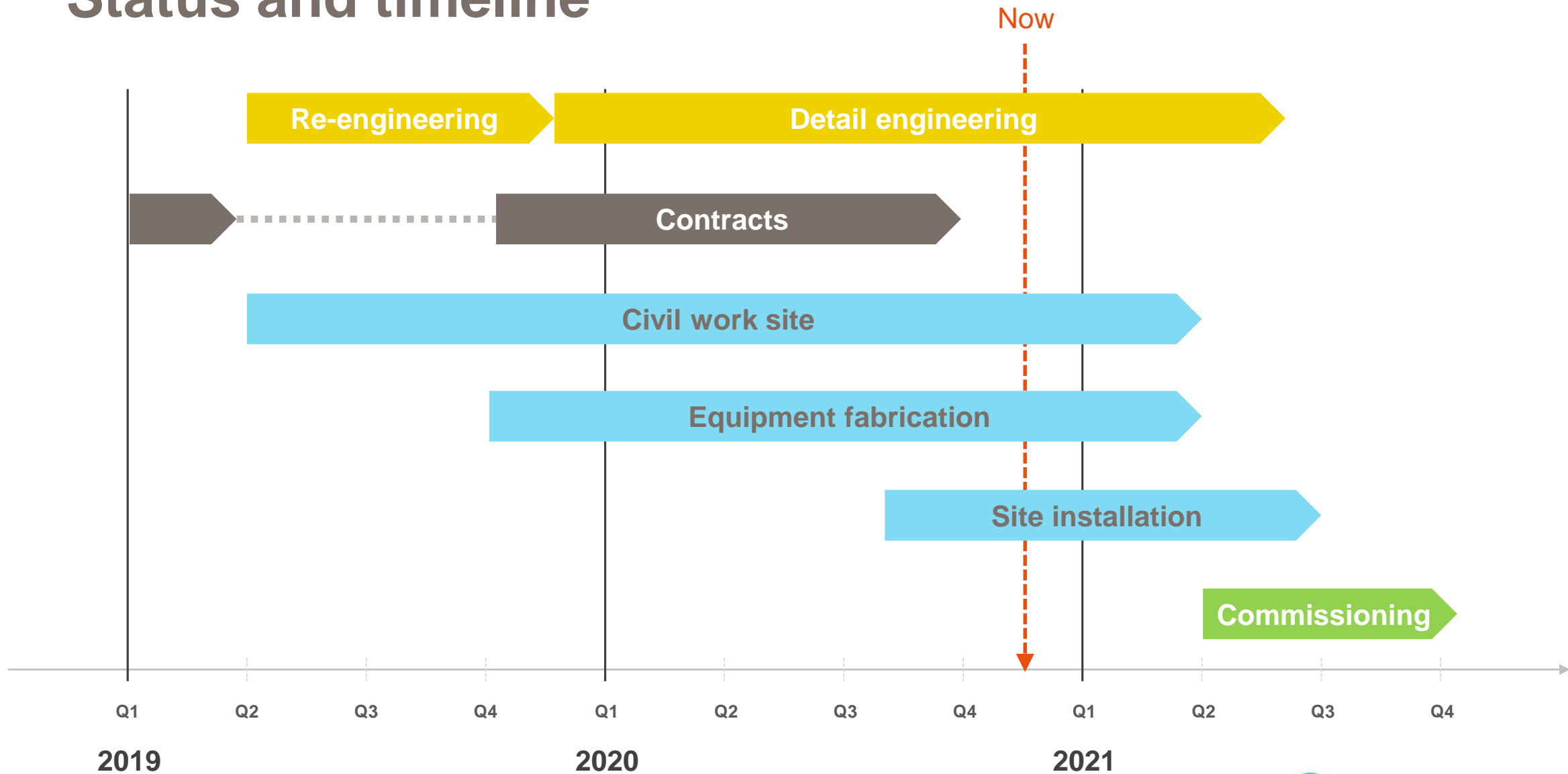


Virtual plant tour

Please note:

- Animation based on 3D model before 30% review (autumn 2019)
- Workers (persons) only shown to create a size reference 😊

Status and timeline



Further project development

- Project development on schedule
- COVID-19 effects
 - None so far
 - Equipment deliveries unlikely to be affected
 - Expect challenges from March 2021 if travel restrictions are maintained at current level
- Commissioning of plant 2021
 - Step-wise
 - Hot commissioning autumn 2021

Tofte, 5 January 2020





statkraft.com || sodra.com