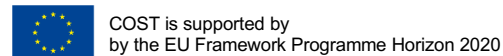


**Newsletter – June 2020**

# **The geography of New Working Spaces and the impact on the periphery**

**CA18214**

*by the Core Group*



CA18214 'The geography of New Working Spaces and the impact on the periphery' which involves **90 research partners** (MC members and Substitutes) from **29 Countries** (including USA, Turkey, UK and Norway), from October 1, 2019 to September 30, 2023.

**Funded by the Horizon 2020 Framework programme of the European Union** around 120.000€/Y, in total 480.000€.

The budget is confirmed based on the achievement of the deliverables **every six months**



*2<sup>nd</sup> COST meeting in Milan – MC members  
Photo Petr Dubovsky*

# CORE GROUP



Action Chair Prof. Iaria Mariotti  
ilaria.mariotti@polimi.it

Grant Holder Scientific Representative Prof.  
Iaria Mariotti ilaria.mariotti@polimi.it



Leader WG 1 - Prof Grzegorz Micek  
grzegorz.micek@uj.edu.pl



Short Term Scientific Missions (STSM)  
Coordinator Dr. Carlez Mendez-Ortega  
carles.mendez@urv.cat



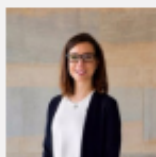
Action Vice Chair Dr. Pavel Bednar  
bednar@utb.cz



Leader WG 2 - Dr Mina Akhavan  
mina.akhavan@polimi.it



Inclusive Conference Target (ICT) grants  
Coordinator Dr. Jacek Gadecki  
jacek.gadecki79@gmail.com



Leader WG 3 Dr Maria Chiara Barzotto  
mb2602@bath.ac.uk



Science Communication Manager Dr. Mina Di  
Marino mina.dimarino@nmbu.no



Leader WG 4 Prof. Bruno Moriset  
bruno.moriset@univ-lyon3.fr



Horizontal activities Coordinator Dr. Petr  
Dubrovsky dubovsky@utb.cz



## CORE GROUP



Core group, 2<sup>nd</sup> COST meeting in Milan, February 12-14, 2020 *Photo Petr Dubovsky*



## COST MEMBERS

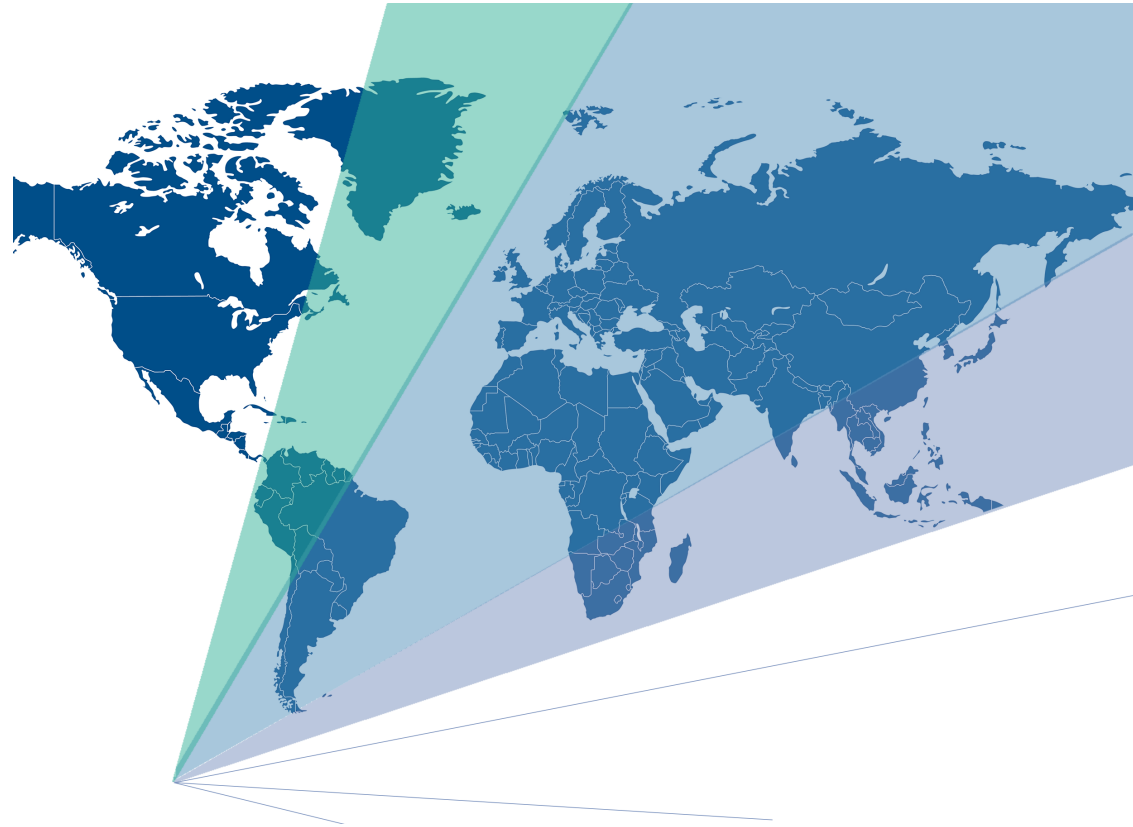


Cost Members, 2<sup>nd</sup> COST meeting in Milan, February 12-14, 2020 *Photo Petr Dubovsky*



## The aims of the project are:

- i) sharing the scientific outcomes on **new working spaces** such as Coworking (CS) and Maker Spaces (MS) (definitions, typologies and geographical distributions)
- i) comparing the best practices and direct and indirect impacts (socio-spatial and economic) with a **particular focus on the periphery**
- ii) sharing the policy tools across the 29 countries.



## Working Group 1 Glossary and Taxonomy

Collection of the state of the art about new working spaces in Europe and outside. The following activities will be carried out: Task 1.1. Definition of the phenomenon; Task 1.2 Definition of the working spaces typologies; Task 1.3 Geographical distribution and location patterns with a specific focus on peripheral areas.

## Working Group 2 ATLAS

WG2 develops an “Atlas” of best practices about new working spaces concerning the effects on the new working spaces and workers performance (direct effects), and the urban socio-economic environment (indirect effects). This WP will include the following activities: Task 2.1 Collection of studies, data and practices about the direct effects of new working spaces (direct effects); Task 2.2 Collection of studies, data and practices about the indirect effects on the urban socio-economic environment with a specific focus on peripheral areas.



## Working Group 3 Tool Box

Collection of the policy tools that have been implemented at national, regional and local levels, and their effects on new working spaces. This knowledge will allow to develop a tool box containing strengths and weaknesses related to the activation and non activation of policy tools.

## Working Group 4 Dissemination

Scientific Dissemination of the main results of the COST action: scientific articles, conference papers, books, book chapters and special issues.

## Communication

- Internal communication
- External communication



# COST DELIVERABLES – activities November 2019 – May 2020



COST is supported by  
by the EU Framework Programme Horizon 2020



2<sup>nd</sup> COST meeting in Milan, February  
12-14, 2020 *Photo Petr Dubovsky*



# COST ACTIVITIES *what we have already achieved*



## 2nd COST Meeting Milano, February 12-14, 2020

The research partners were involved in the 3 days activities at the Politecnico di Milano and around the City of Milan. The 4 working groups discussed about the outcomes of the first four months of the research. Then, the Management Committee Members attended the 2nd COST Meeting and made important decisions on the future of the Action.



## Inclusive Target Country -Conference Grant

The **1st Call ITC CG** was launched and offered **2 grants** of the total cost of **2,000 Euro**, i.e. 1000 EUR per selected Grantee. The applications were temporarily suspended due to the coronavirus.



2<sup>nd</sup> COST meeting in Milan, February 12-14, 2020  
Photo Petr Dubovsky



COST is supported by  
by the EU Framework Programme Horizon 2020



## 1st COST Meeting Bruxelles, October 1, 2019

October 1, 2019, marked the start of the Action. Management Committee Members from 26 participating countries attended the 1st COST Meeting and made important decisions on the future of the Action.

## COST ACTIVITIES *what we have already achieved*



### Logo Competition

The COST Action opened a call for graphic designers on prototyping an Action logo last December 2, 2019. The contest was open to any student from universities and organisations included in the Action. Notification of logo design results was sent on January 24, 2020. The winners are Alessandra Pellarano, Silvia Caldi and Alessia Petra Epifano, who are students at the Politecnico di Milano. They were invited to join the 2nd COST meeting at Politecnico di Milano, February 12-14, 2020.



Winners – Ceremony 2<sup>nd</sup> COST meeting in Milan, February 12-14, 2020 Photo Petr Dubovsky



COST is supported by  
by the EU Framework Programme Horizon 2020



***The winning logo!***

## COST ACTIVITIES *what we have already achieved*



### 1st Call Short Term Scientific Missions

The first four young researchers have been granted and ready for the STSMs. The plans of the four STSMs were presented by the researchers at the 2nd COST Meeting at Politecnico di Milano, February 12-14, 2020. Two early career researchers are now in STSM in USA (Cornell University, College of Human Ecology) and Italy (Politecnico di Milano, Milan).

2 STSMs were cancelled due to Covid



*Irene Manzini Ceinar from UCL is currently in STSM at Politecnico di Milano, Photo Petr Dubovsky*



*Chiara Tagliaro from Polimi has recently finished the STSM at Cornell University, USA, Photo Petr Dubovsky*



# COST ACTIVITIES *what we have already developed*



## Trainig school

Representatives of stakeholders will be involved in the Training school in order to help the network researchers to develop methodologies for collaborative learning processes, and comparative assessment of practices and related policy and plans



## Summer School July 6-24, 2020 e-learning

Dear all, we want to annouce the Summer School, July 6-24, 2020, e-learning and live webinars organized by the CostAction. For more info and **how to register**, please have a look at the link in the article. **Phd students, post doc and early careers are very welcome! The deadline for the subscription is June 20th!**





**POLITECNICO MILANO 1863**  
DIPARTIMENTO DI ARCHITETTURA, INGEGNERIA DELLA COSTRUZIONE E AMBIENTE COSTRUITO

**POLITECNICO MILANO 1863**  
DIPARTIMENTO DI ARCHITETTURA E SPAZI URBANI

**TF**  
DIPARTIMENTO DI ECCELLENZA INNOVATIVE TERRITORIALI 2018-2022

**REC** Real Estate Center

Case study by:  


### III EDITION SUMMER SCHOOL ON WORKPLACE MANAGEMENT

Focus: COWORKING SPACES  
COST ACTION 18214

---

**WHAT IS SSWM?**  
INTERNATIONAL AND INTERDISCIPLINARY WORKSHOP ON WORKPLACE MANAGEMENT

**WHERE AND WHEN**  
**6-12 JULY** Workplace management basics, E-LEARNING / STREAMING  
**13-19 JULY** Focus on coworking spaces, E-LEARNING / LIVE WEBINARS  
**20-24 JULY** Practical workshops E-LEARNING / LIVE WEBINARS

**APPLY NOW!**

For info about the program:  
swm-dabc@polimi.it  
www.facebook.com/SSWMPolimi/

For applications:  
www.rec.polimi.it/offerta-formativa/summer-school-wm/

Selections are based on CV. Several scholarships are available.

The school is co-organized by COST ACTION 18214 entitled «The geography of New Working Spaces and the impact on the periphery»




**WHO CAN APPLY?**

**Undergraduate and graduate students** who are interested in design, strategies, change management and facility management, as well as the effects of new working spaces on the workers, urban space and peripheral areas.

**Researchers** who are investigating the social, economic and environmental impact of the most recent working space changes, and those who have joined the CA18214 or are interested in the topic of the action.

**SUMMER SCHOOL DESCRIPTION**  
2020 edition: focus on coworking spaces

By referring to the 'COSTACTION 18214', in which lecturers and organizers are involved, and by presenting preliminary outcomes of the COSTACTION 18214, the participants of the summer school will get a comprehensive overview of the current knowledge on the **new working spaces** such as **coworking spaces** and new trends in the local and international contexts.

The nature of work has been evolving recently, along with the way **working spaces** are used. This dynamic has major implications for **working space design, management and location** that need to respond to new challenges. This course will assist students, practitioners and researchers to engage with these ongoing evolutions.

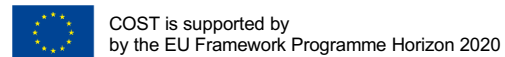
**Participants will learn to:**

- Integrate different disciplines in a sound reasoning around the workplace, with a focus on coworking spaces;
- Manage the planning, programming, and executing phases of a workplace change process;
- Manage planning and policy tools in fostering coworking space diffusion;
- Picture the future evolution of workplaces and its impact at the building and local scale, both in core and peripheral areas.

[https://www.rec.polimi.it/wp-content/uploads/2020/05/Flyer\\_SSWM-2020-QRcode\\_WEB-1.pdf](https://www.rec.polimi.it/wp-content/uploads/2020/05/Flyer_SSWM-2020-QRcode_WEB-1.pdf)

# **COST DELIVERABLES**

## **November 2019 - May 2020**





## COST DELIVERABLES COMPLETED IN MAY 2020

Activities-Tasks-Deliverables	Year 1				Year 2				Year 3				Year 4			
	Q1	Q2	Q3	Q4	Q5	Q6	Q7	Q8	Q9	Q10	Q11	Q12	Q13	Q14	Q15	Q16
<b>WG1. Glossary and Taxonomy</b>																
Task 1.1. Definition of the phenomenon		D1.1														
Task 1.2. Definition of the working spaces typologies		D1.2, D1.3														
Task 1.3. Geographical distribution and location patterns				D1.3	D1.4											
<b>WG2. Atlas</b>																
Task 2.1. Collection of studies, data and practices on the DIRECT effects of new working spaces							D2.1, D2.2									
Task 2.2. Collection of studies, data and practices on the INDIRECT effects of new working spaces							D2.1, D2.2									
<b>WG3. Tool Box</b>																
Task 3.1 Collection and discussion about policy tools and effects, focus on the periphery											D3.1					
Task 3.2. Guidelines												D3.2				
<b>WG4. Dissemination</b>																
Task 4.1. Conference papers, reports and scientific publications				D4.3, 4.4, 4.5								D4.3, 4.4, 4.5				
Task 4.2. Interviews, meetings and workshops with stakeholders					D4.2				D4.2							
Task 4.3. Multimedia content for Universities websites	D4.1						D4.1				D4.1					D4.1

## COST DELIVERABLES COMPLETED IN MAY 2020

Deliverables	Year 1				Year 2				Year 3				Year 4		
	Q1	Q2	Q3	Q4	Q5	Q6	Q7	Q8	Q9	Q10	Q11	Q12	Q13	Q14	Q15
D1.1 - Internal working paper on preliminary knowledge about main characters of case studies															
D1.2 - Internal working paper defining a template to be used in structured comparison of international research findings															
D1.3 - Database of WG1 findings: typologies and location patterns of new workplaces															
D1.4 - Summary reports of WG1 findings: typologies and location patterns of new workplaces															

### Working Group 1 Glossary and Taxonomy

Collection of the state of the art about new working spaces in Europe and outside. The following activities will be carried out: Task 1.1. Definition of the phenomenon; Task 1.2 **Definition of the working spaces typologies**; Task 1.3 **Geographical distribution and location patterns with a specific focus on peripheral areas**

**D.1.1. Internal working paper on preliminary knowledge about main characters of case studies –submitted to the COST Officer may 2020**

**D.1.2. Internal working paper defining a template to be used | structured comparison of international research findings –submitted to the COST Officer may 2020**



# DISSEMINATION AND COMMUNICATION



COST is supported by  
by the EU Framework Programme Horizon 2020



# Part 1. Internal Communication Strategies

Mina Di Marino, Science Communication Manager

- **Use of Slack** –for coordinating the internal activities amongst 90 participants - **costaction18214.slack.com –please visit Slack at least weekly**
- **COST Graphics** for communicating deliverables –**contact Mina Di Marino**
  - facebook
  - twitter
  - website
  - powerpoint layout
  - posters
  - envelopes
  - reports
  - cover page for scientific books





## USE OF THE LOGOTYPE-SUMMARY

06 CO-BRANDING  
GUIDELINES  
FOR ACTIONS

**C** acknowledgement including the title of our COST and code 18214

In any kind of publications, communications and blogs, the reference to **the title of our CA18214** is needed.

**D** description of COST (official network)

**AE** COST logo and link to COST website (www.cost.eu)

	(A) COST logotype	(B) EU emblem + text	(C) Acknowledgment	(D) Boilerplate	(AE) Website
Brochures	✓	✓	✓	✓	✓
Flyers	✓	✓	✓	✓	✓
Posters	✓	✓	✗	✗	✓
Websites	✓	✓	✗	✓	✓
Videos	✓	✓	✓	✓	✓
Articles in scientific journals	✗	✗	✓	✗	✓
Books	✓	✓	✓	✓	✓



[https://www.cost.eu/wp-content/uploads/2018/08/COST\\_brand\\_book.pdf](https://www.cost.eu/wp-content/uploads/2018/08/COST_brand_book.pdf)

## Part 2 External Communication Strategies

Mina Di Marino, Science Communication Manager

- **Development of the Communication Plan:** What do we want to communicate? To whom we are communicating and why?
- **Channels for communicating the Action**



## What do we want to communicate?

We are an interdisciplinary team of researchers from 28 countries who are expert on an emerging phenomenon of new working spaces (co-working spaces, maker spaces and other types of co-working) that deal with the labour market and causes impacts on workers, urban and regional development (socio-economic and spatial impacts) which involve all Europe (with different dynamics).

This phenomenon has not yet investigated when analyzing the impacts on the peripheries (socio-economic and spatial), impacts of policy and planning tools for the development of new working spaces. **This is one the major focus of our research.**



## To whom are we communicating.

*Stakeholders can become  
COST partners – WG members*

**FIRMS, the third sector and civil society organizations**, which are directly involved and/or indirectly interested in the management and/or use of new workplaces, as the ones which are based in cities, regions or countries where the research network partners originate; and  
**REAL ESTATES**

**PUBLIC ADMINISTRATIONS**, which are currently or potentially committed in fostering new working spaces and/or strengthening the development of peripheral areas, as city municipalities, metropolitan and/or regional institutions, and national governments of areas where the research network partners are placed;

**LOCAL AND NATIONAL REPRESENTATIVES** of trade unions, which are dealing with the ongoing radical changes in the labour market;

**REPRESENTATIVES** of European institutions and organisations of employers and employees are also principle-targeted audiences.

The main stakeholders of the *project* to include, starting from (but not restricting to) personal contacts of the Action members, are as follows

# **Channels for communicating the Action (off-line and on-line tools)**

- **COST Action 18214 Website**
- **Facebook page and FB groups**
- **Webinars on FB**
- **Twitter page**
- **International and national conferences, seminars and workshops**
- **Newsletter via email/slack**





Website hosted by the NMBU *Please add the website to your email signature*

About

Members

Activities

Working groups

Deliverables

## The geography of New Working Spaces and impact on the periphery



Funded by the Horizon 2020 Framework programme of the European Union



[www.new-working-spaces.eu](http://www.new-working-spaces.eu)

## ***All COST members are encouraged to help the following teams!***

**FB and Twitter team:** Mina Di Marino, Ilaria Mariotti, Irene Manzini Ceinar, Mina Akhavan, Aleid Brouwer, Mariachiara Barzotto, Chiara Tagliaro, Federica Rossi and Stefania Fiorentino

**Webinar teams:** Ilaria Mariotti, Irene Manzini Ceinar, Alessandro Gerosa and other COST members

**FB group:** Ilaria Mariotti, Ivana Pais, Cecilia Manzo, Alessandro Gerosa, Irene Manzini Ceinar, Mina Di Marino and other COST members.

**Webinars in collaboration with other research groups** (e.g. *Research Group Collaborative Spaces* with COST member Bastian Lange from Germany)

**Blogs in collaboration with other chanel**s (see e.g. *Conversation* <https://theconversation.com/uk> with Supple Briony –COST member from Ireland)



## Facebook page -475 followers *Follow Us*

**cost**  
EUROPEAN COOPERATION  
IN SCIENCE & TECHNOLOGY

New Working Spaces  
@COSTActionCA18214NeW.Sp

Heim  
Innlegg  
Hendingar  
Videoar  
Bilete  
Om  
Samfunn

Endre framsidebilete

The Geography of  
**New Working Spaces**  
and the Impact on the Periphery

NeW.Sp.  
NEW WORKING SPACES

CA18214

Lik Følgjer Del ...

+ Legg til ein knapp

Opprett Direkte Hending Tilbod

Skriv eit innlegg

Føreslegne Grupper

Caffè letterario sospeso  
3,5k members • 80 innlegg per dag  
Bli med

IO STO CON MIMMO LUCANO



<https://www.facebook.com/COSTActionCA18214NeW.Sp>

**FB group (COST members from Italy) - 260 followers.**

***All COST members are encouraged to open a FB group at the national level***



<https://www.facebook.com/groups/886380135100739>

## Webinars on FB *Follow Us*

*All COST members are encouraged to propose topics and talks*



New Working Spaces

+ Add a Button Reklamer View as Visitor

New Working Spaces la til ei hending.  
27. mai kl. 09:31

A discussion with

Moderator

MINA AKHAVAN  
DASUJ - Politecnico di Milano

ANITA FUZI  
Coworking expert,  
anitifuzi.com

JULIANNE BECKER  
Co-founder, Cocoonat -  
a workstation Retreat

GOSIA KRAMER  
Co-founder and CEO of  
The Office Luxembourg

COWORKING IN COVID-19 EMERGENCY  
THURSDAY 28th of MAY - 4pm (BST) / 17.00 (Italy)  
Live on <https://www.facebook.com/COSTActionCA18214NeW.Sp>

TO., 28. MAI  
Coworking in Covid-19 Emergency Webinar  
10 Went · 21 Interested

125 Personar nådd 4 Samhandlingar Boost Unavailable

<https://www.facebook.com/groups/886380135100739>



## Twitter page 109 followers – *Follow Us*

**New Working Space**  
283 Tweets

The Geography of **New Working Spaces** and the Impact on the Periphery  
CA18214

**NeW.Sp.**  
NEW WORKING SPACES

**New Working Space**  
@NewWorkingSpace Follows you

COST Action 18214: The geography of New Working Spaces and the impact on the periphery.  
88 partners; 28 countries  
October 1, 2019 - September 30, 2023  
Joined March 2020  
429 Following 109 Followers  
Followed by Federica Rossi, Pavel Bednář, and 6 others you follow

**You might like**

- anastasia\_panori** @an\_panori Follow
- richard rijns** @richardrijns Follow
- Elisabetta Marinelli** @Bettatweeting Follow

Show more



<https://twitter.com/newworkingspace>

## CONFERENCE PAPERS, ROUND TABLES AND SPECIAL SESSIONS BY COST MEMBERS

We are tracking the dissemination and communication of our COST Action results and outcomes by looking periodically at conferences, workshops, special sessions and roundtables that **participating COST members** have organized (or will organize) and/or where **participating COST members** are supposed to present a **joint conference paper (at least 2 countries)**, as well as proposed conference participation.'

***Please fill-out the google sheet***

[https://docs.google.com/spreadsheets/d/1GcMmyK9LMvVqo0DQJtrvAlc-uuaP\\_VA-6w2diYJOPcM/edit?usp=sharing](https://docs.google.com/spreadsheets/d/1GcMmyK9LMvVqo0DQJtrvAlc-uuaP_VA-6w2diYJOPcM/edit?usp=sharing)



## SCIENTIFIC PUBLICATIONS BY COST MEMBERS

We are tracking the dissemination of our COST Action outcomes by registering periodically scientific publications (**joint paper at least 2 participating COST members; at least 3 for open access publications**) (e.g. national and international scientific articles, conference proceedings, books and book chapters)

***Please fill-out the google sheet***

[https://docs.google.com/spreadsheets/d/1GcMmyK9LMvVqo0DQJtrvAlc-uuaP\\_VA-6w2diYJOPcM/edit?usp=sharing](https://docs.google.com/spreadsheets/d/1GcMmyK9LMvVqo0DQJtrvAlc-uuaP_VA-6w2diYJOPcM/edit?usp=sharing)



## SUBMITTED/ACCEPTED PROJECTS FOLLOWING COST ACTION OBJECTIVES (2020)

We are tracking the submitted and accepted projects following COST Action objectives (2020) and thus collaborations amongst **participating COST members** to new research projects, or projects to which participating COST members can apply due to the current participation to the COST (see e.g. INTER-COST)

***Please fill-out the google sheet***

[https://docs.google.com/spreadsheets/d/1GcMmyK9LMvVqo0DQJtrvAlc-uuaP\\_VA-6w2diYJOPcM/edit?usp=sharing](https://docs.google.com/spreadsheets/d/1GcMmyK9LMvVqo0DQJtrvAlc-uuaP_VA-6w2diYJOPcM/edit?usp=sharing)



## SUBMITTED AND ACCEPTED PROJECTS FOLLOWING COST ACTION OBJECTIVES (2020)

- LTC20047 Regional development and public policy under creative economy: Mapping, knowledge sharing and management of New Working Spaces in the Czech Republic. INTER-COST – INTER-EXCELLENCE. Ministry of Education, Youth and Sports of the Czech Republic. 5/2020-9/2023. Grant holder, Tomas Bata University in Zlín, Czech Republic
- ITN Marie Curie-CORAL has been awarded to Vasilis Advikos - main proposer (Panteion University, Greece) and other partners, in Italy: Ilaria Mariotti (POLIMI), FR with Capdevila, etc. It is 3-year project starting in January 2021.



**European Union Website:** <https://www.cost.eu/actions/CA18214>

**Project Website:** [www.new-working-spaces.eu](http://www.new-working-spaces.eu)

**FB page:** <https://www.facebook.com/COSTActionCA18214NeW.Sp>

**Twitter:** <https://twitter.com/newworkingspace>

**FB group (Italy-Covid 19):**

<https://www.facebook.com/groups/886380135100739>



# THANK YOU

*The Core Group*

