

Land rehabilitation and allocation of land to youth: What is the potential in Tigray?

Mesfin Tilahun (PhD)

Launching Workshop of
The NORGLOBAL2 Project on **“Youth Business Groups for Sustainable Development: Lessons from the Ethiopian *Model*”**

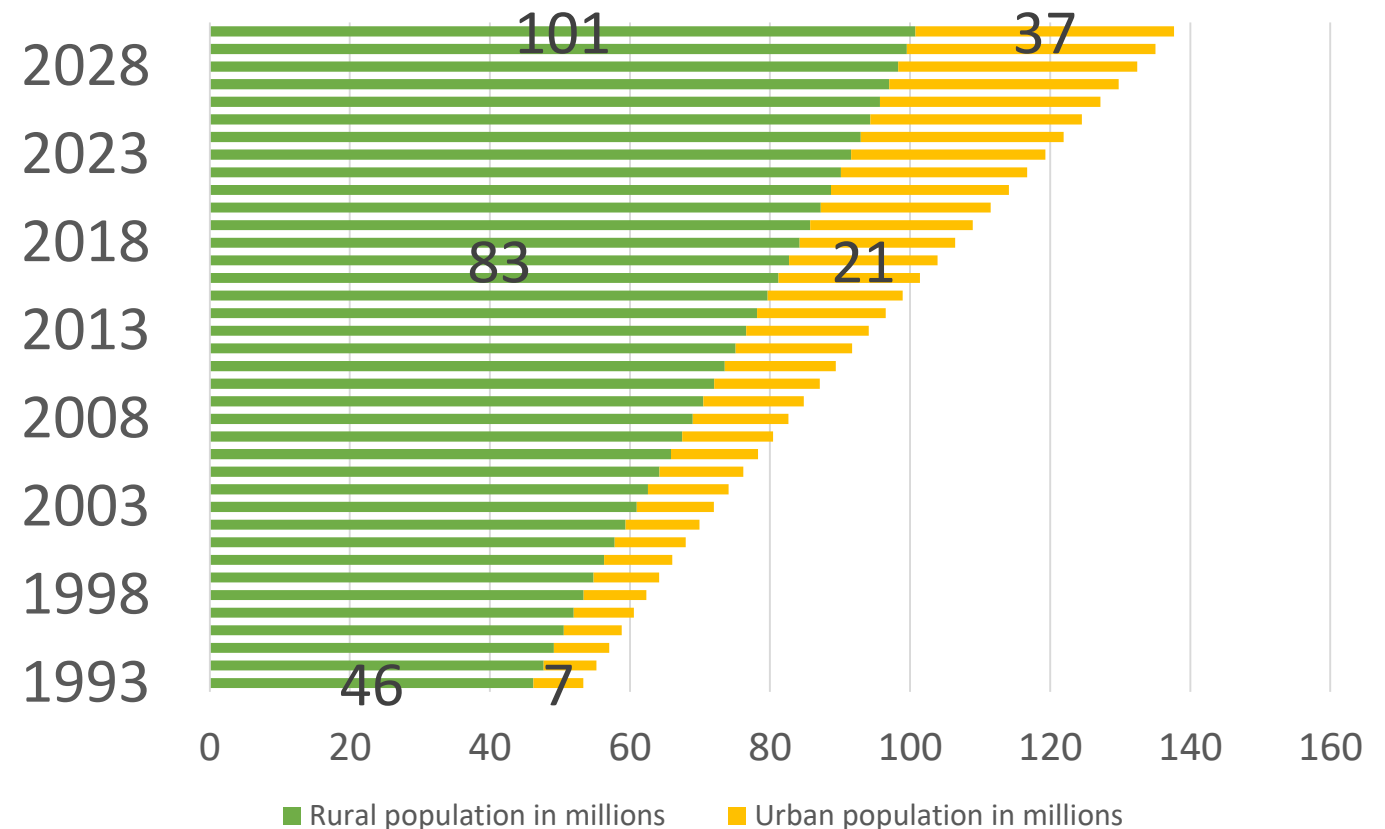
Desalegn Hotel, Addis Ababa

February 04, 2019

Population projection (Upto 2030)

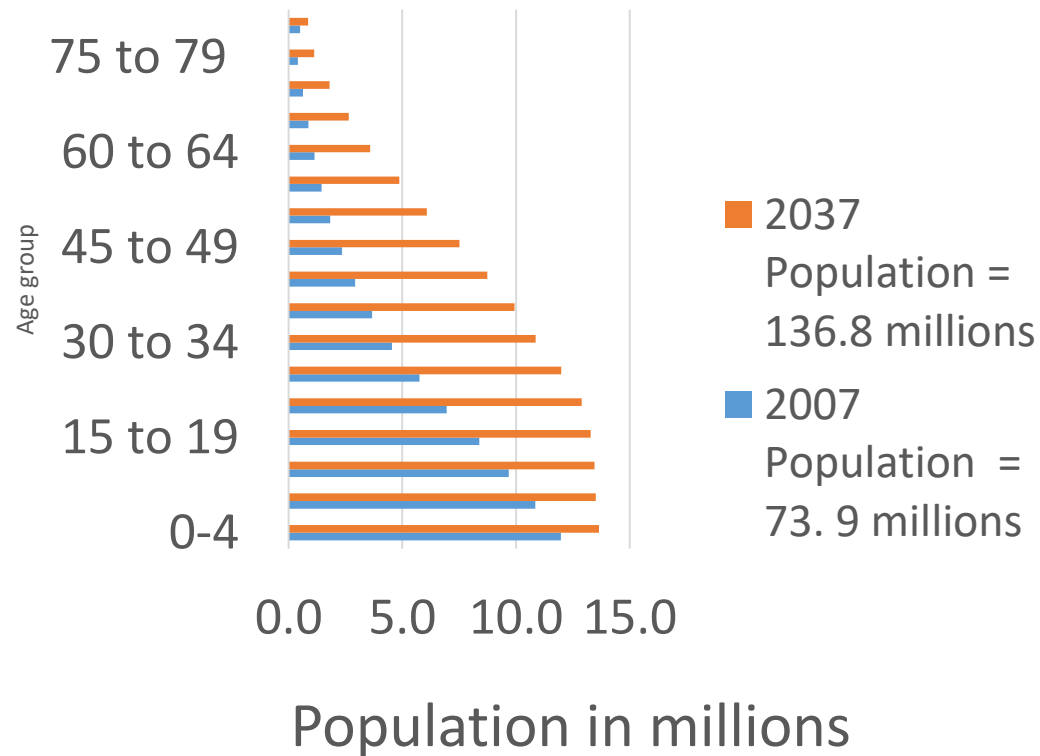
- Population growth
- Dominance of the rural sector still continue in the future (73% of the population by 2030)

Figure 1 : Ethiopia's historical, current and projected population (FAOSTAT 2018)

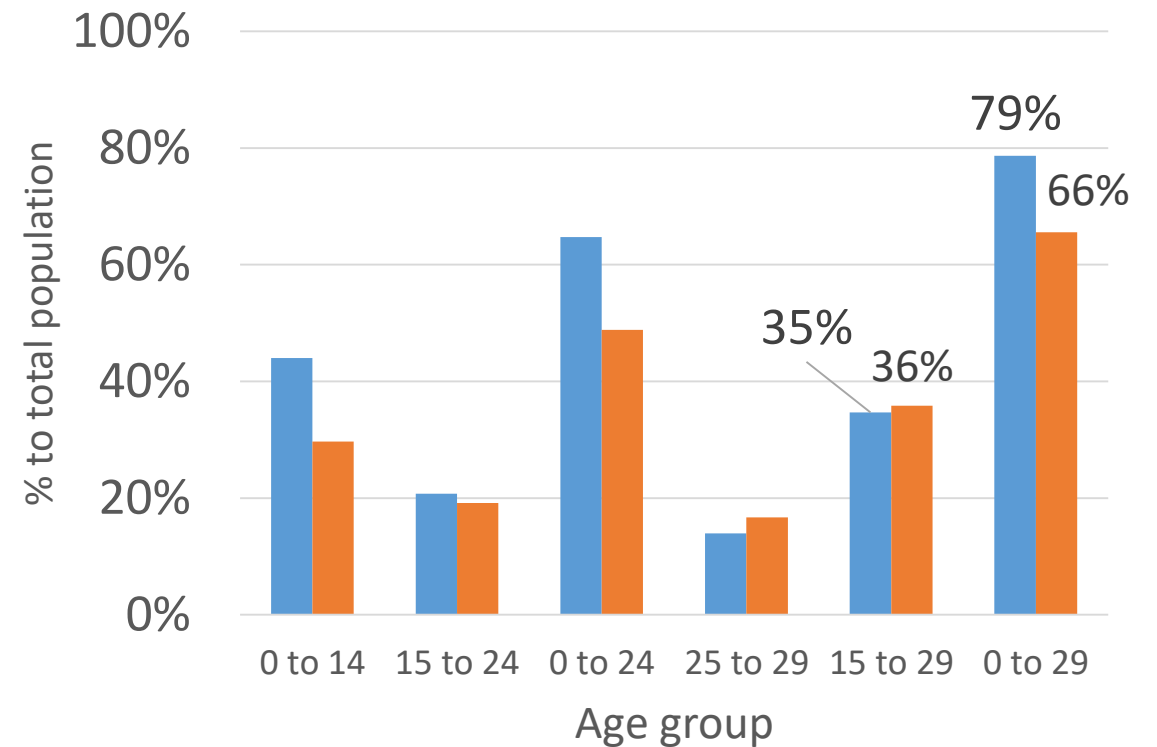


Population Age structure (A country of Youth)

Ethiopia's population age structure (source: www.csa.gov.et)

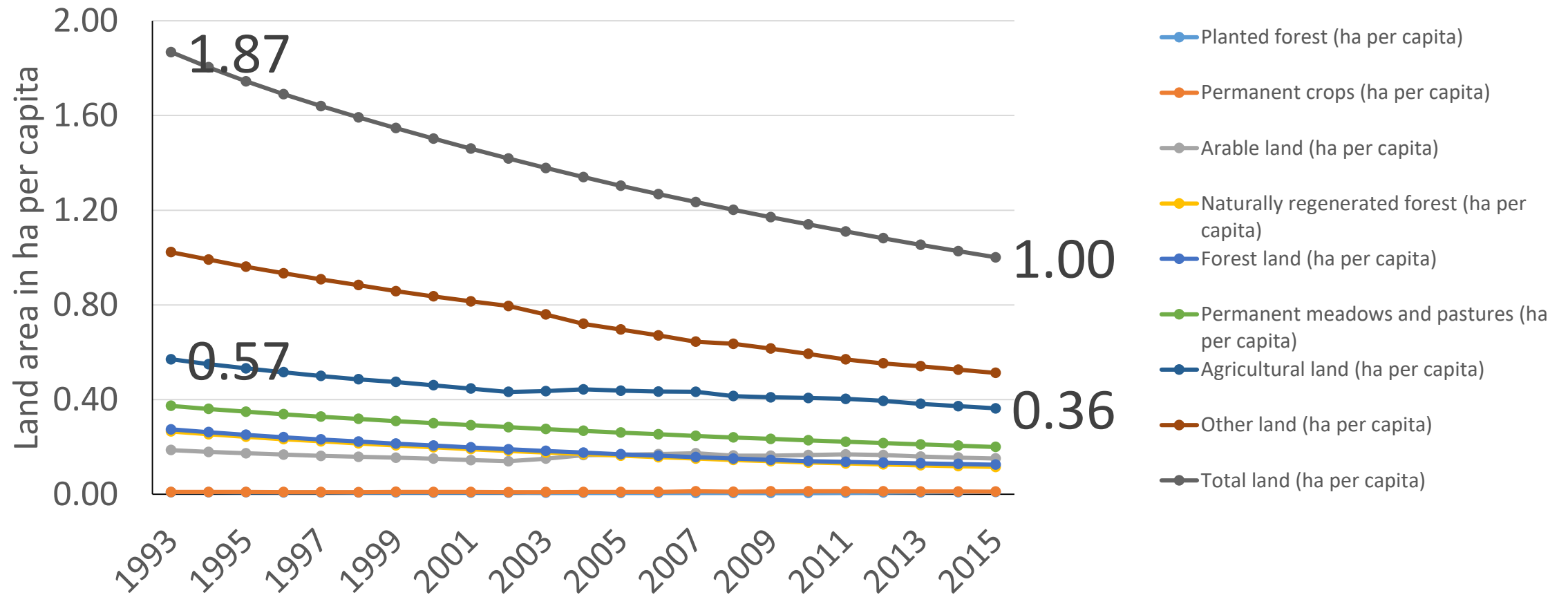


Ethiopia's Children & Youth Population (source: www.csa.gov.et)



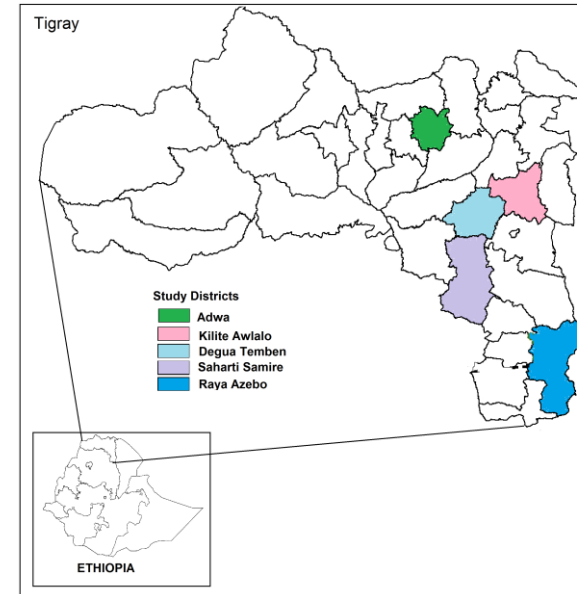
Decline in land per capita by land use

Figure 2: Land use per capita (1993 to 2015)



Rehabilitation of Degraded Land in Tigray

- Until 2015, close to **551 thousand ha** of land, or 13.3% of the total land area of Tigray, was rehabilitated with labor contributions of rural people in the region (Holden and Tilahun, 2018).
 - 69% of this land was rehabilitated through PSNP
 - 21% through SLM Program, and
 - 10% with the support from projects funded by the World Food Program and other donors
- A policy of up to **0.5 ha of rehabilitated land allocation per landless person** has been practiced in the region
 - Allocated to 442 youth groups in 5 districts of our study
 - Close to 300 youth group were also allocated with access to mining sites (mainly for mining stones, sand)



Drone footage of rehabilitated land in Tigray



Livelihood opperunities for the youth from rehabiltated lands



Question for Discussion

- What kinds of **evidence based interventions** are required to sustain and enhance rural youth's livelihood options created from the land rehabilitation?

THANK YOU!

