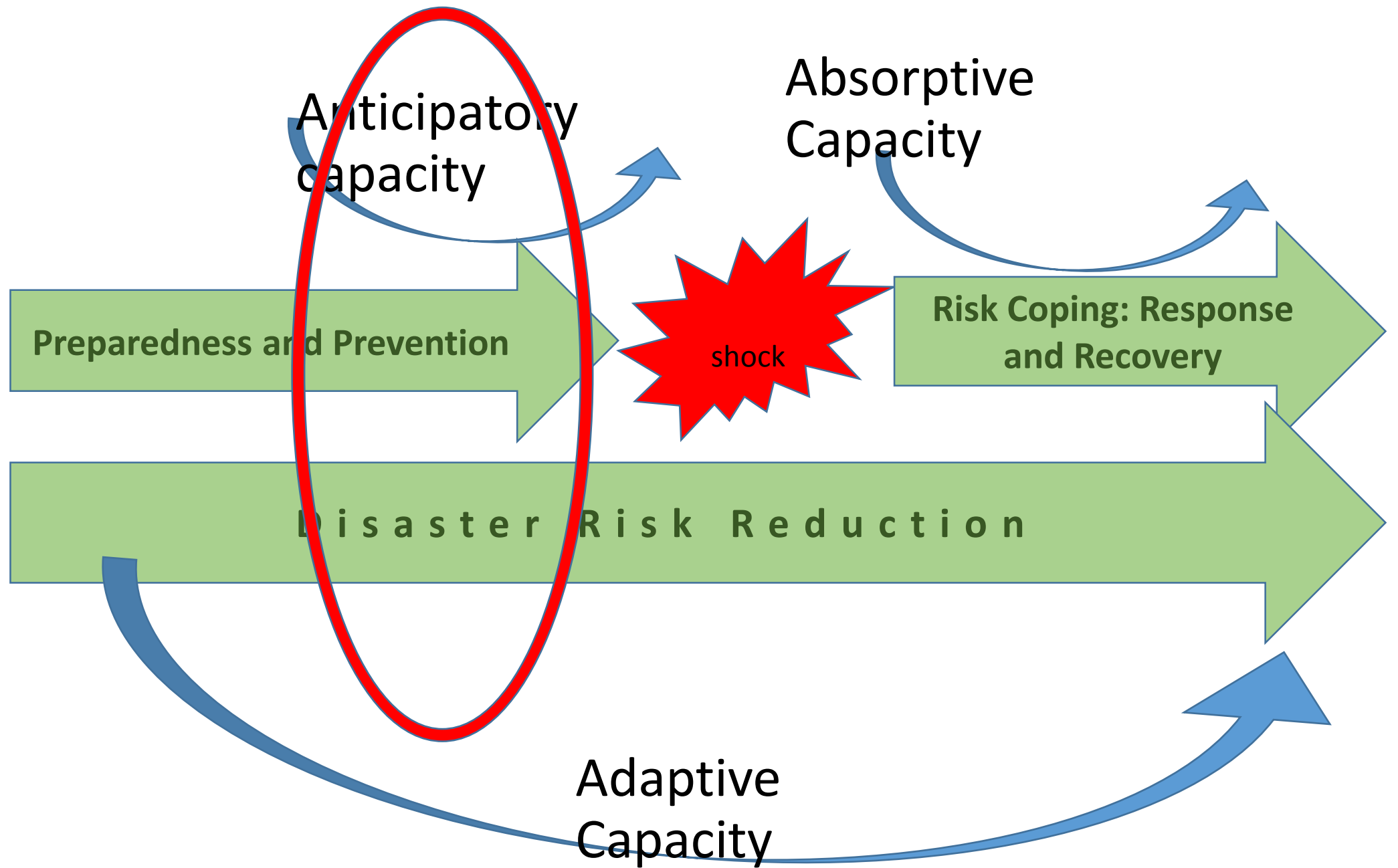


Scalability and Sustainability: Can new approaches in anticipatory action and social protection offer an entry point for vulnerability reduction?

Cecilia Costella
Red Cross Red Crescent Climate Centre
December 2016

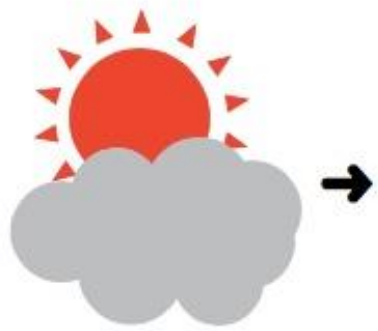


Why anticipation & early action for resilience building?

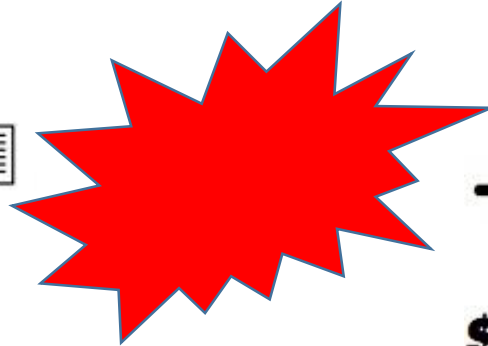
- The need for humanitarian aid has never been higher and its cost continues to increase
- Climate shocks and natural disasters represent a significant part of the humanitarian burden
- Early warnings exist, but they are not useful without early action and funding. E.g. Somalia, Pakistan
- Investing in early action and preparedness is more cost-effective

How do we act early effectively?

Information

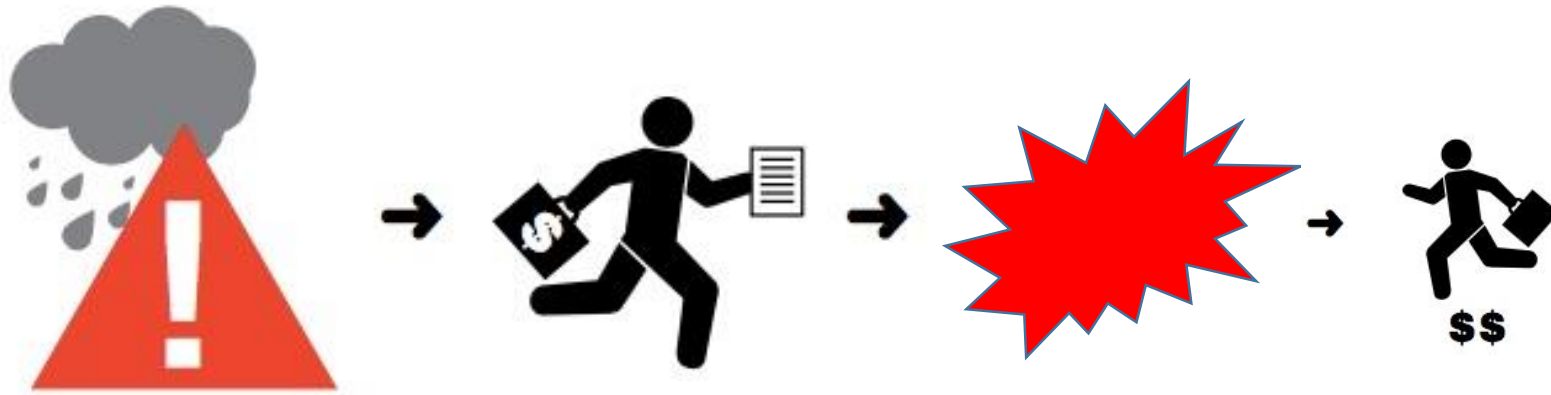


Plan / Action



This is business as usual!

How to anticipate and act early effectively?



One option: **Forecast-based financing**

- Humanitarian funding is available
- To take anticipatory, pre-defined, action
- After a forecast is issued and before a hazard event strikes.

FbF Lesson: #1

- Action plans need to be based on robust evidence, including forecast skill and evidence of the effectiveness of early action

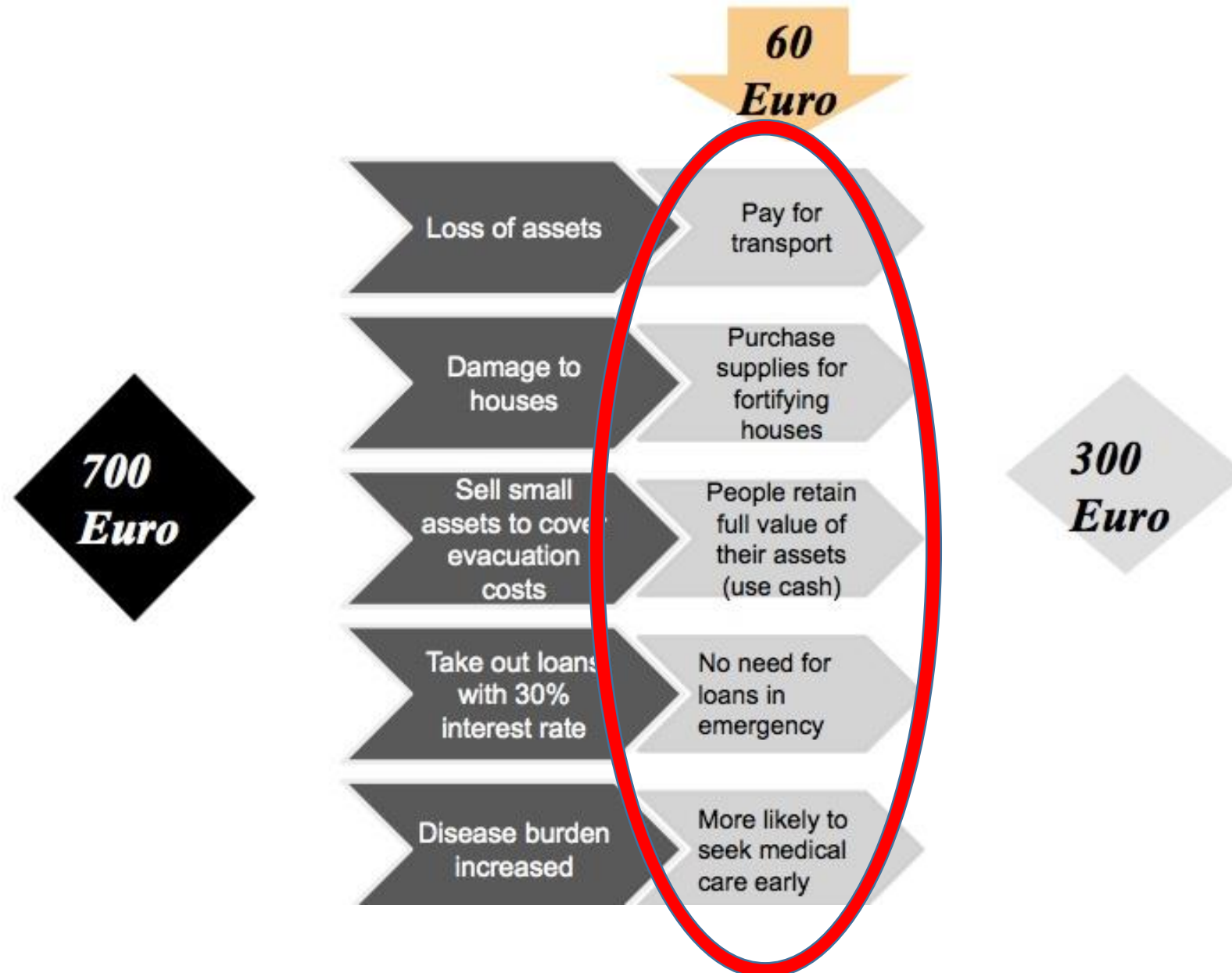
- Livelihoods, Roles and Responsibilities matter not only for EW information, but for EA = **Actions**
- E.g. Uganda

Bangladesh- Forecast-based Financing Pilot

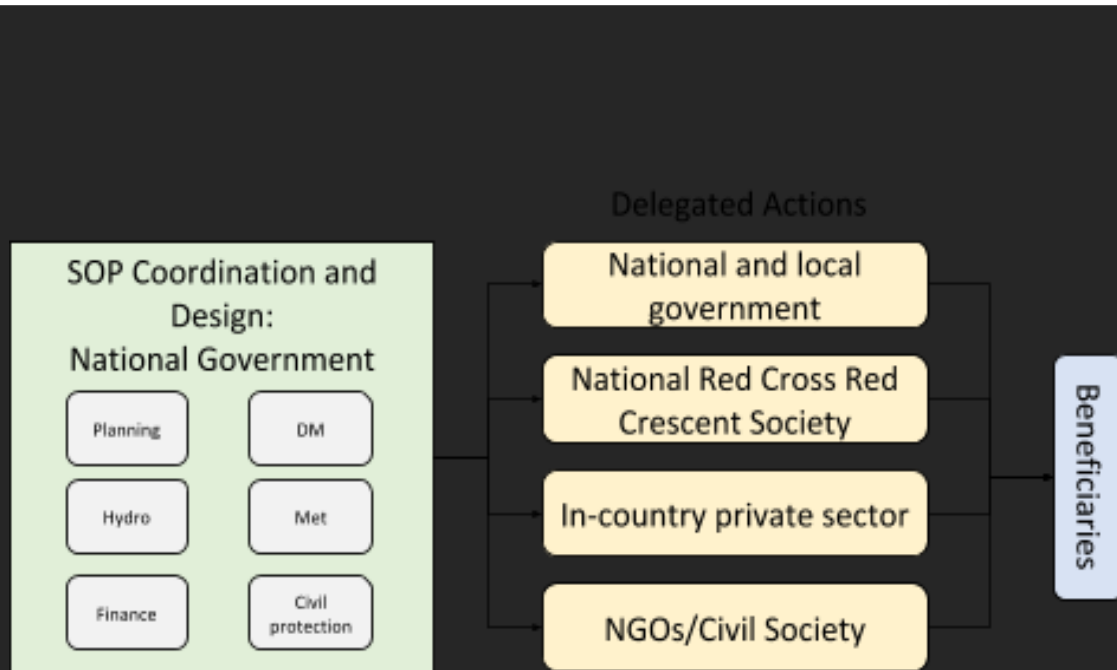
- Flood-prone and cyclone prone areas where HHs need to evacuate at least once every two years
- **Cash-based preparedness actions** in both flood- and cyclone-prone project areas.
- Pilot: 4,500 households
- Implemented by the BDRCS with funding from the German Red Cross and technical support from the RC Climate Centre.



Benefits = Avoided Losses

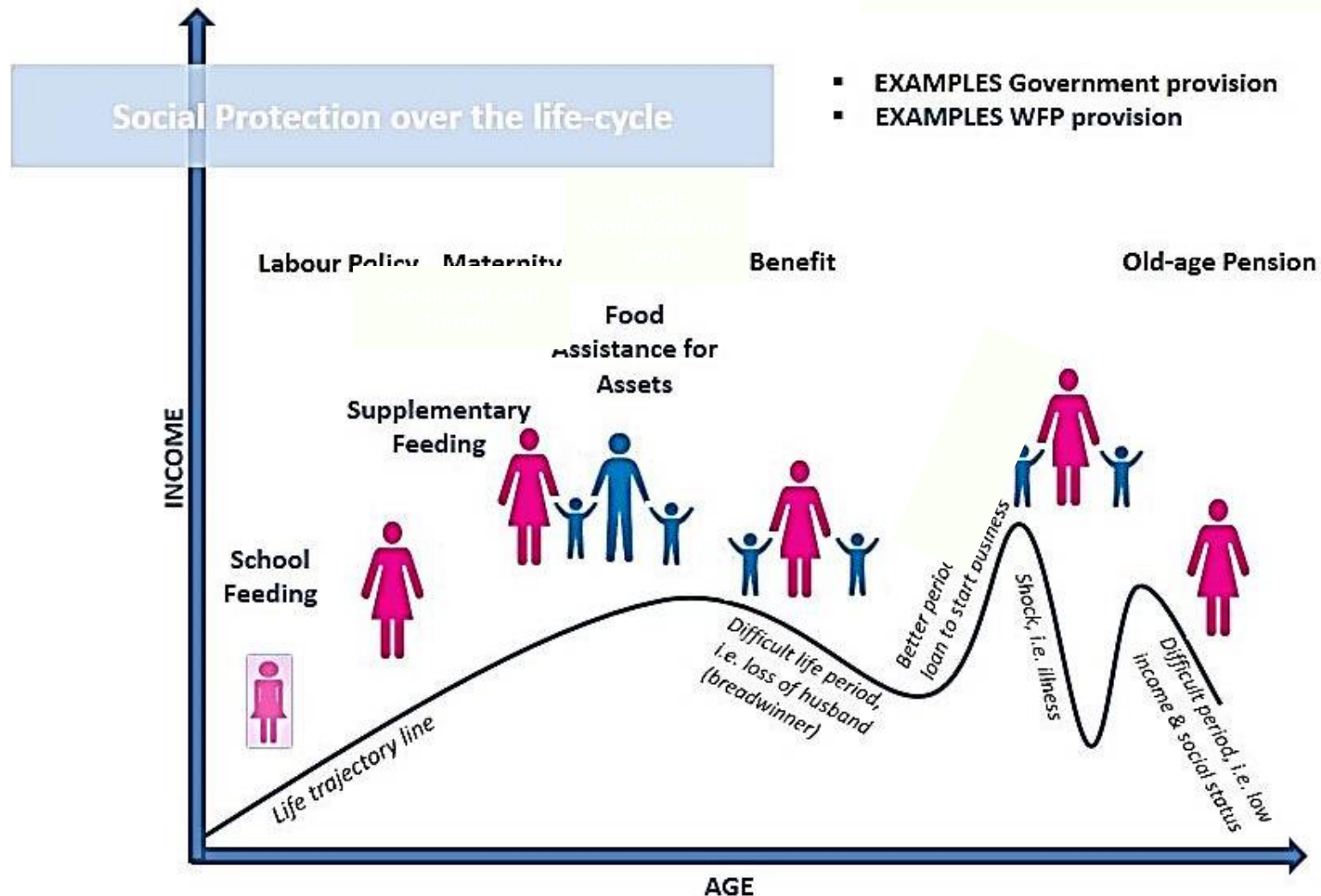


FbF Lessons: #2



- Importance of having in place a delivery mechanism for actions
- FbF mechanism needs to be embedded in the long-term structures of a country or region to ensure coordination and sustainability

policies and programs designed to reduce poverty and vulnerability by helping people manage different risks throughout the life cycle



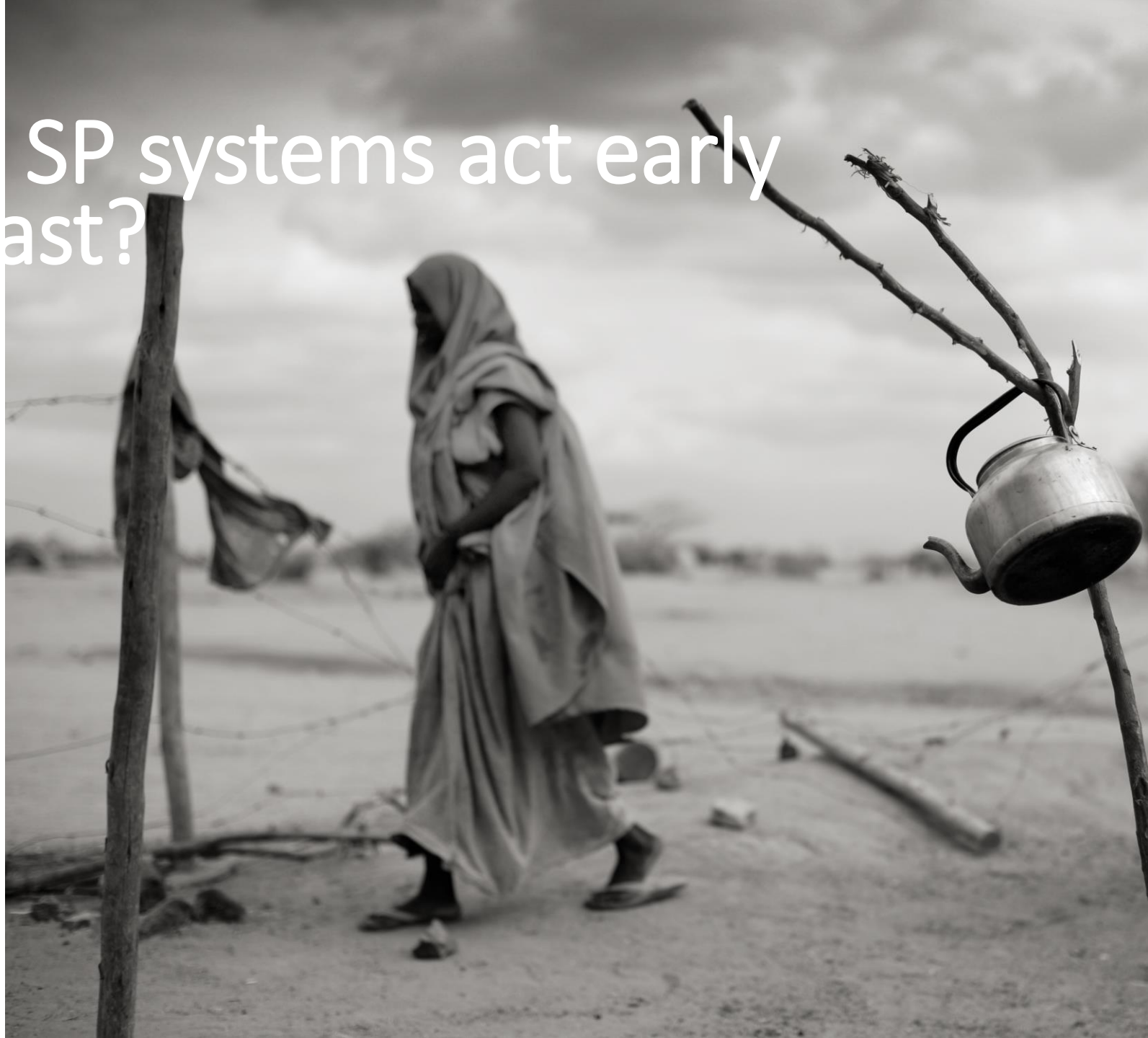


Why Social Protection for anticipation and early action?

- SP has a prevention function ahead of shocks
- Social protection have nationally owned, large-scale, long-term platforms for climate risk management
 - coordination and less fragmentation
 - government leadership
 - support structure
 - common system

Reflection: Can SP systems act early based on forecast?

- Timeliness
- Predictability
- Targeting
- Actions
- Scale & Sustainability





THANK YOU!

