

Defining Landscape Democracy conference
Oslo, 3-6 june 2015

Landscape Values and Assessment

Institutions attributing value to landscape

Some features in the Venetian Area

Chiara Quaglia

Department of Historical and Geographic Sciences and the Ancient World
University of Padova

RESEARCH QUESTIONS

In many European countries, including Italy, the landscape management and planning are regulated by specific laws and the Public Authority. It is undeniable that one of the most usual tools to manage landscape by the Public Authority is to recognize the most “valuable” landscapes and regulate them stressing on the conservation of the values recognized.

- Which values do the institutions identify in Landscape?
- What is behind the institutional processes of identification of values in Landscape?
- Are the processes of value attribution democratic, explicit, inclusive, effective? In one word, successful?
- How can this approach be integrated with the indications of the European Landscape Convention?

INSTITUTIONS ATTRIBUTING VALUE TO LANDSCAPE: Evolution of «landscape assets» regulation in Italy

1905	Protection of the Ravenna Pinewood, considered as the first Landscape Protection Law in Italy
1909	First law about cultural and historical heritage
1922	Protection of natural or historical beauties (<i>Croce Law</i>)
1939	Protection of Buildings and areas of notable public interest (<i>Bottai Law</i>), namely: <ul style="list-style-type: none">• Immovable things of outstanding natural beauty• Villas, gardens and parks• Complexes of immovable things having aesthetic and traditional value• Beautiful views
1967	Franceschini Commission document “For the protection of cultural heritage in Italy”
1985	“Areas protected by law” (<i>Galasso Law</i>), namely: <ul style="list-style-type: none">• Coastal territories• Lakes• Rivers• Mountains, Alps > 1660 m above sea level and Appenines > 1200 m above sea level• Glaciers• National or regional Parks and Reserves• Forests• Marshlands• Volcanoes• Archaeological areas
2000	EUROPEAN LANDSCAPE CONVENTION
2004	National Code of Cultural and Landscape Heritage: gathers the previous laws and introduces a new framework of landscape planning tools
2006	Italian Ratification of the ELC

WHICH VALUES HAVE BEEN/ARE ATTRIBUTED TO LANDSCAPE?

Environmental values

Historical and cultural values

Aesthetic values

Economic and functional values

Collective identity values

Affective and personal values

Landscape is worth because... :

... of its natural features, vegetation, waterbodies, fauna and flora, ecological values, etc.

... of its historical sites, monuments, buildings, rural features, etc.

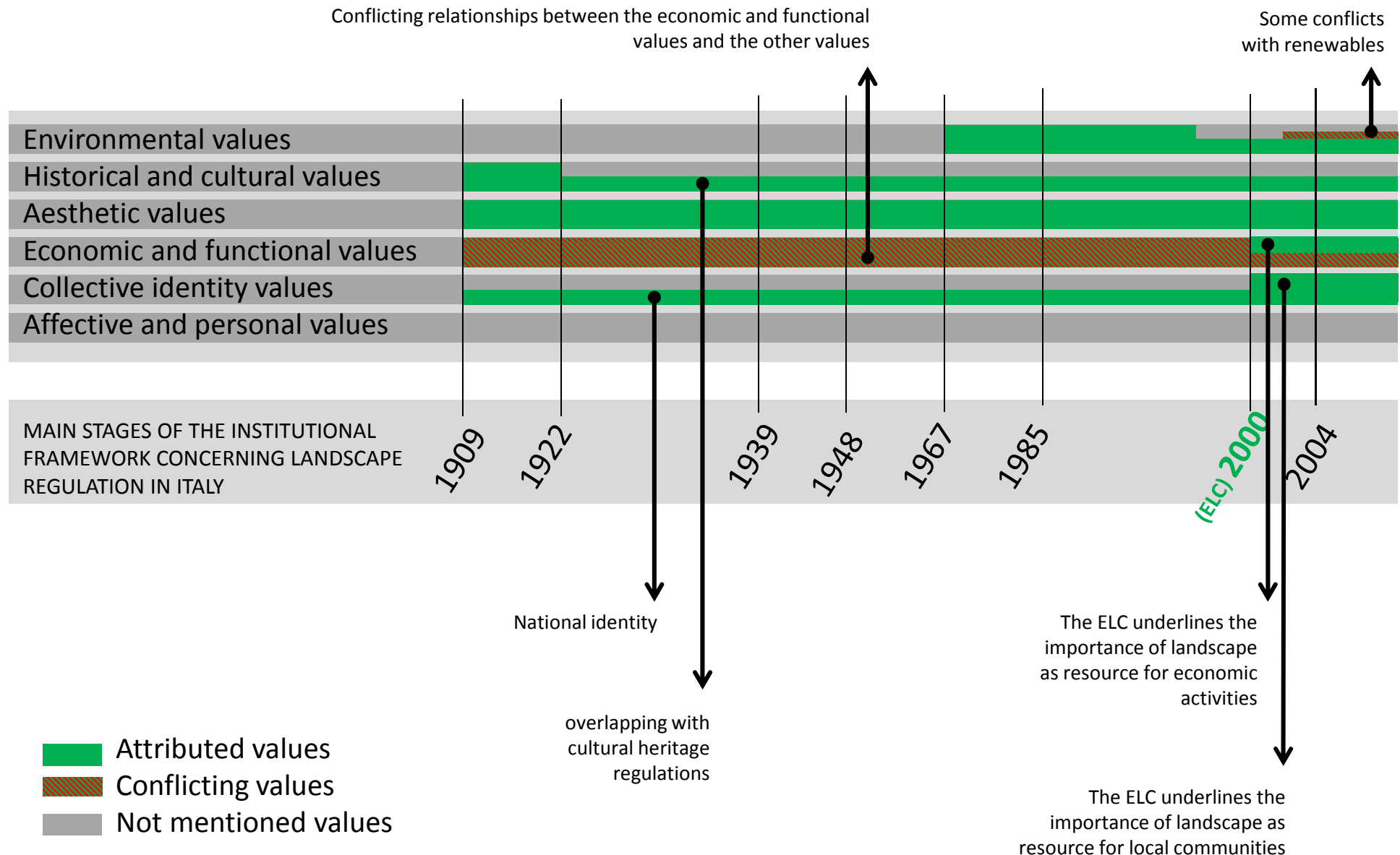
... of its panoramic views, picturesque sites, etc.

... it supports human activities (agriculture, tourism, everyday life, etc.)

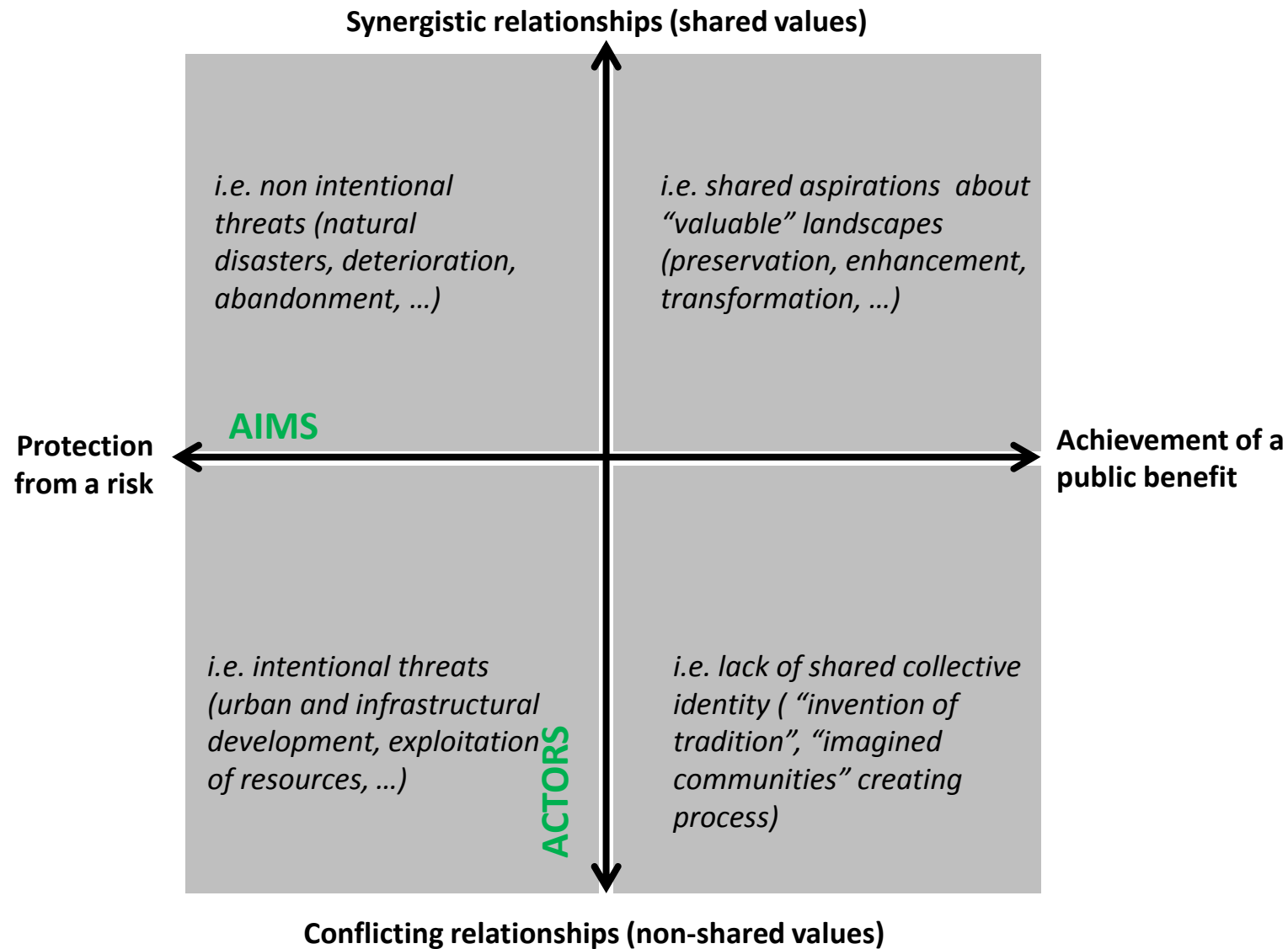
... it is a mirror of a community (on a global, national, local level)

... of the experiences, memories, personal taste of an individual

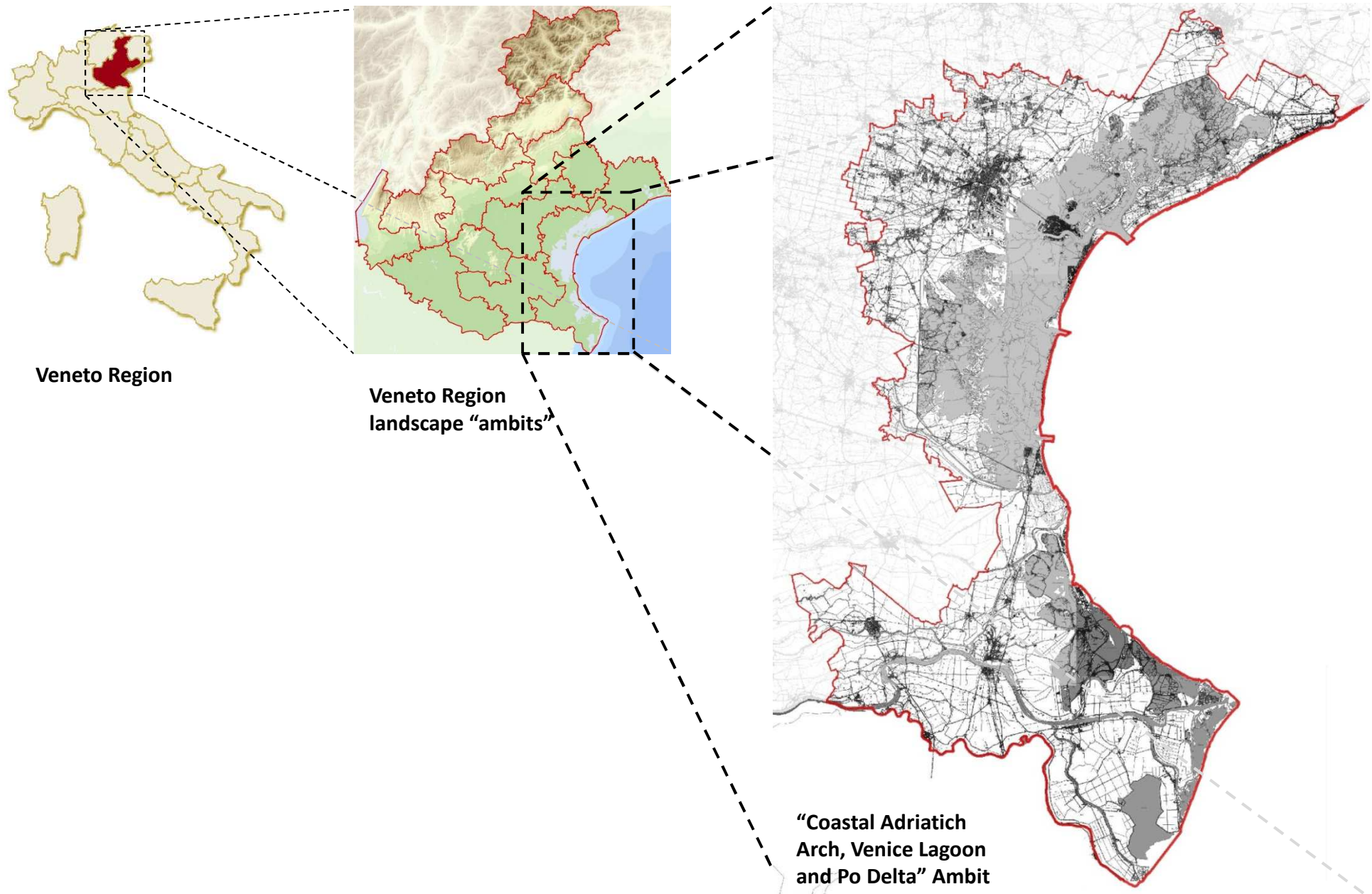
INSTITUTIONS ATTRIBUTING VALUE TO LANDSCAPE: Evolution of «landscape assets» regulation in Italy



BEHIND THE VALUES: «CIRCUMSTANCES»



A CASE STUDY : THE LANDSCAPE PLAN «COASTAL ADRIATIC ARCH, VENICE LAGOON AND PO DELTA»



OVERVIEW OF THE LANDSCAPE ASSETS IN THE CASE STUDY AREA

Total number:

509 (divided in **455** micro-areas, so called “individual assets”, and **54** macro-areas, so called “complex-assets”).

The first asset:

year **1927**

The last asset:

year **2000**

The biggest asset:

“Venice lagoon”, **65348 ha** (year 1985)

The smallest asset:

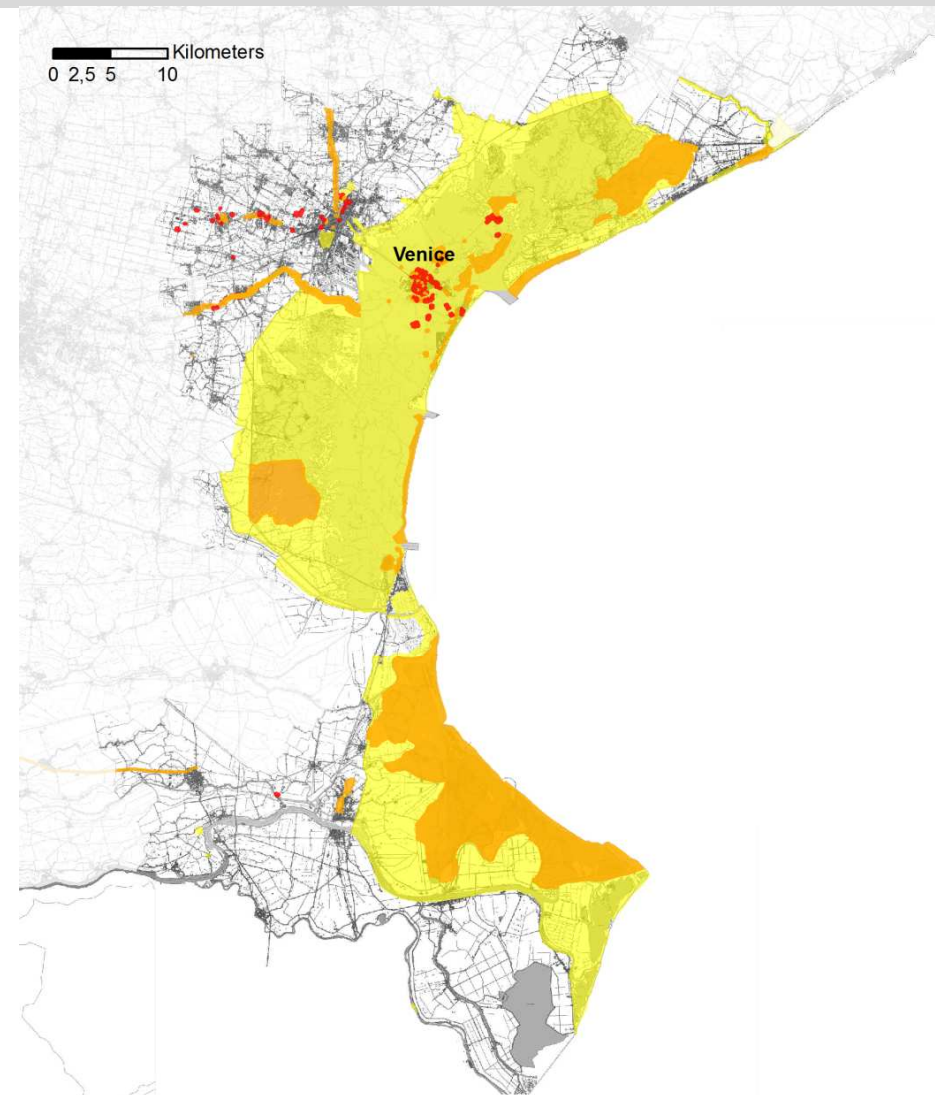
“Little garden in Giudecca Island”, **0,001 ha** (year 1948)

Year with the highest number of decrees:

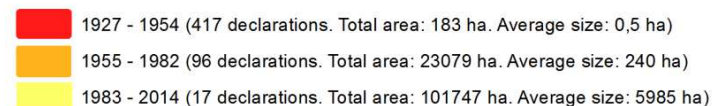
1948 (178 decrees, total area 13,2 ha)

Year with the largest decrees:

1985 (10 decrees, total area 101284 ha)

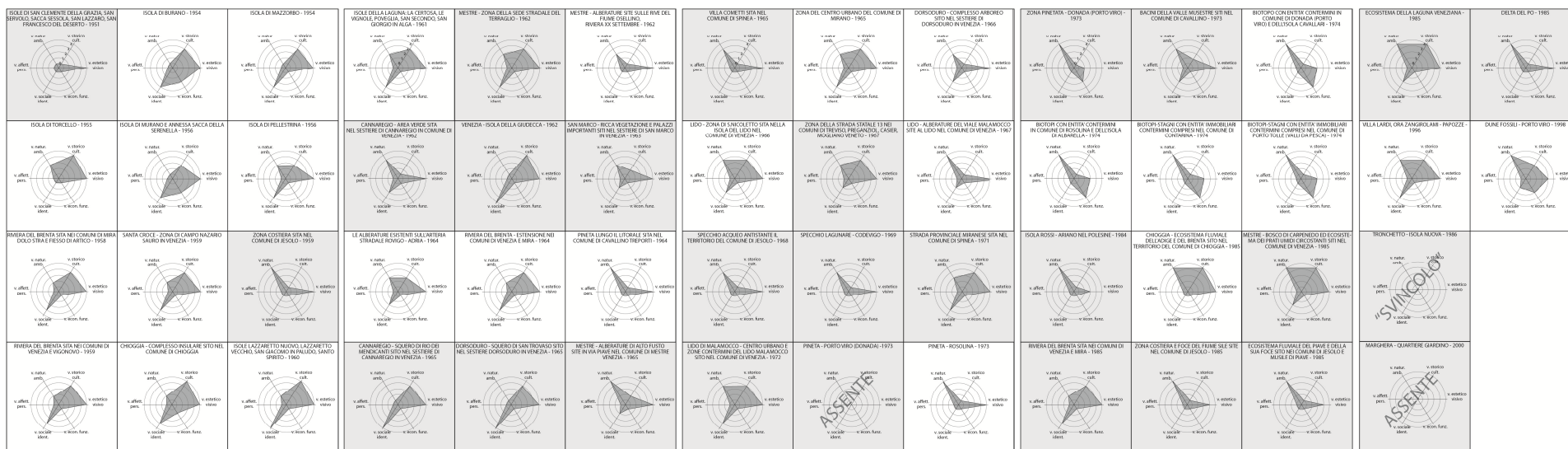
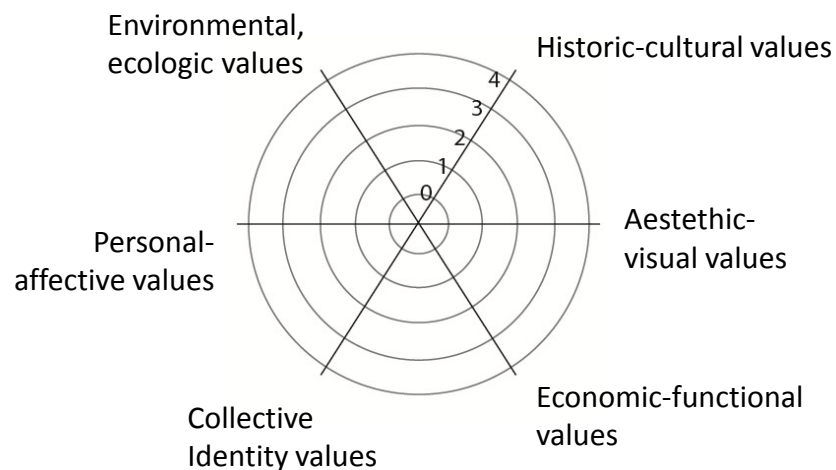


Landscape assets in the Venetian area: evolution from 1927 to present



WHICH VALUES HAVE BEEN ATTRIBUTED OVER THE TIME?

An in depth analysis of the official declarations: values

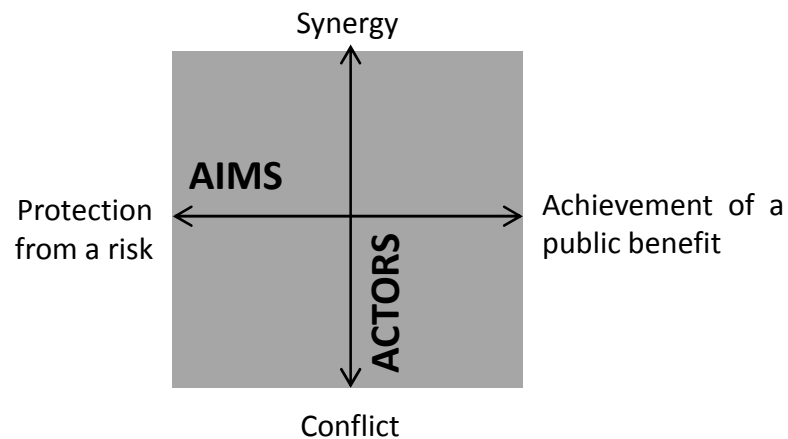


Both Declaration and proposal available

Only declaration available

WHICH VALUES HAVE BEEN ATTRIBUTED OVER THE TIME?

An in-depth analysis of the official declarations



ISOLE DI SAN CLEMENTE DELLA GRAZIA, SAN SERGIO, SACCA REFEDELA, SAN AZECCO, SAN FRANCESCO DEL DESERTO - 1951	ISOLA DI BURANO - 1954	ISOLA DI BURANO - 1954	ISOLE DELLA LAGUNA LA CERTOSA, LE VINCIOLE, PORTUGHIA, SAN RECONDO, SAN GIORDANO IN ALGA - 1961	MESTRE - ZONA DELLA SEDE STRADALE DEL TERRAZZO - 1962	MESTRE - ALBERATURE SITE SULLE RIVE DEL FIUME CORNELIO, RIVIERA XX SETTEMBRE - 1962	VILLA COMETTI SPA NEL COMUNE DI SPIREA - 1965	ZONA DEL CENTRO URBANO DEL COMUNE DI MIRANO - 1965	DORSODURO - COMPLESSO ARBOREO SITO NEL SESTIERE DI DORSODURO IN VENEZIA - 1966	ZONA PNEIWA - DONADA (PORTO VIRE) - 1973	BACINI DELLA VALLE MUSESTRE SITI NEL COMUNE DI CAVALLINO - 1973	BIOTOPICO-CONTINUITÀ CONTENIMENTI IN COMUNE DI DONADA (PORTO VIRE) E DELL'ISOLA CAVALLARI - 1974	ECOSISTEMA DELLA LAGUNA VENEZIANA - 1985	DELTA DEL PO - 1985
ISOLA DI FORCELLO - 1955	ISOLA DI MURANO E ANNESSA SACCA DELLA SERENELLA - 1956	ISOLA DI PELLESTRINA - 1958	CANNAREGGIO - AREA VERDE SITA NEL SESTIERE DI CANNAREGGIO IN COMUNE DI VENEZIA - 1962	VENEZIA - ISOLA DELLA GIURECCA - 1962	SAN MARCO - ISOLA VERDE, DAZIONE E PIAZZA IMPORTANTI SITI NEL SESTIERE DI SAN MARCO IN VENEZIA - 1963	LEDO - ZONA DI MACOLLETTO SITA NELLA ISOLA DEL LEDO NEL COMUNE DI VENEZIA - 1966	ZONA DELLA STRADA STATALE 13 NEL COMUNE DI TREVISO, PREGANZOL, CASIER, ROSSANO VENETO - 1967	LEDO - ALBERATURE DEL VILE MALAMACCO SITO AL LEDO NEL COMUNE DI VENEZIA - 1967	BIOTOPICO-CONTINUITÀ CONTENIMENTI IN COMUNE DI ROSSOLINA E DELL'ISOLA DI ALUMELLA - 1974	BIOTOPICO-CONTINUITÀ CONTENIMENTI COMPRESI NEL COMUNE DI CONTARINA - 1974	BIOTOPICO-CONTINUITÀ CONTENIMENTI COMPRESI NEL COMUNE DI PORTO TOLLE (VILLI DA PESCA) - 1974	VILLA LAROL, ORA ZANGIOLARI - PADOVA - 1996	DUNE FOSSILI - PORTO VIRE - 1998
RIVIERA DEL BRENTA SITA NEL COMUNE DI MIRANO SITO E PRESSO DI ARICO - 1958	SANTA CROCE - ZONA DI CAMPO NAZARIO SAURO IN VENEZIA - 1959	ZONA COSTIERA SITA NEL COMUNE DI JESOLO - 1959	LE ALBERATURE ESISTENTI SULL'ARTE STRADALE ROVERO - AUSA - 1964	RIVIERA DEL BRENTA - ESTENSIONE NEL COMUNE DI VENEZIA E MIRANO - 1964	PINETA LUNGO IL LITORALE SITA NEL COMUNE DI CAVALLINO TREVISO - 1964	SPECCHIO AZZURRO ANTISTANTE IL TERRITORIO DEL COMUNE DI JESOLO - 1968	SPECCHIO LAGUNARE - CODEVIGO - 1969	STRADA PROVINCIALE MIRANESE SITA NEL COMUNE DI SPIREA - 1971	ISOLA ROSSI - ARANO NEL POLESINE - 1984	CHIOGGIA - ECOSISTEMA FLUVIALE DELL'ARNO E DEL BRENTA SITO NEL TERRITORIO DEL COMUNE DI CHIOGGIA - 1985	SAN GIULIO (PORTO VIRE) SITO NEL COMUNE DI VENEZIA - 1985	TRONCHETTO - BOCCA NUOVA - 1985	
RIVIERA DEL BRENTA SITA NEL COMUNE DI VENEZIA E VIGNOVOL - 1959	CHIOGGIA - COMPLESSO ROLLANE SITO NEL COMUNE DI CHIOGGIA	ISOLA LAZZARETTO MACIO LAZZARETTO VECCHIO, SAN GIACOMO IN PALUDI, SANTO SPIRITO - 1960	CANNAREGGIO - ISOLA DI RIO DEL MENDICANTI SITO NEL SESTIERE DI CANNAREGGIO IN VENEZIA - 1960	DORSODURO - ISOLA DI SANTOPIRE SITO NEL SESTIERE DORSODURO IN VENEZIA - 1965	MESTRE - ALBERATURE DI ALTO FIUTO SITO IN VIA PIAZZA NEL COMUNE DI MESTRE VENEZIA - 1965	LEDO DI MALAMACCO - CENTRO URBANO E ZONE CONTENIMENTI DEL LEDO MALAMACCO SITO NEL COMUNE DI VENEZIA - 1972	PINETA - PORTO VIRE (DONADA) - 1973	PINETA - ROSSOLINA - 1973	RIVIERA DEL BRENTA SITA NEL COMUNE DI VENEZIA E MIRANO - 1985	ZONA COSTIERA E FOCE DEL FIUME SILE SITO NEL COMUNE DI JESOLO - 1985	SUA FOCE SITO NEL COMUNE DI JESOLO E ISOLE DI PIAZZA - 1985	MARIGHERA - QUARTIERE GIARDINO - 2000	

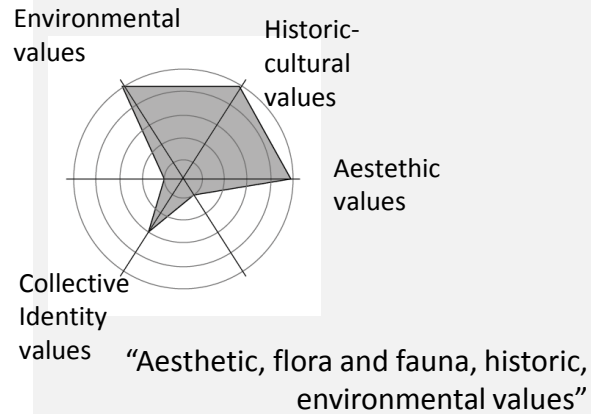
WHICH VALUES HAVE BEEN ATTRIBUTED OVER THE TIME?

An in depth analysis of the official declarations

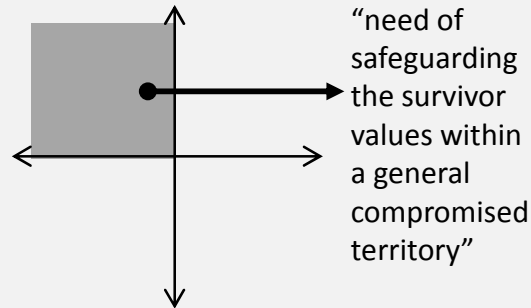
The Carpenedo Woods. Declared as landscape asset in 1985.

Analysis of official declaration documents:

Values:

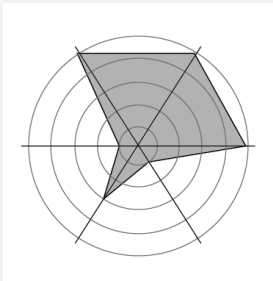


Circumstances:



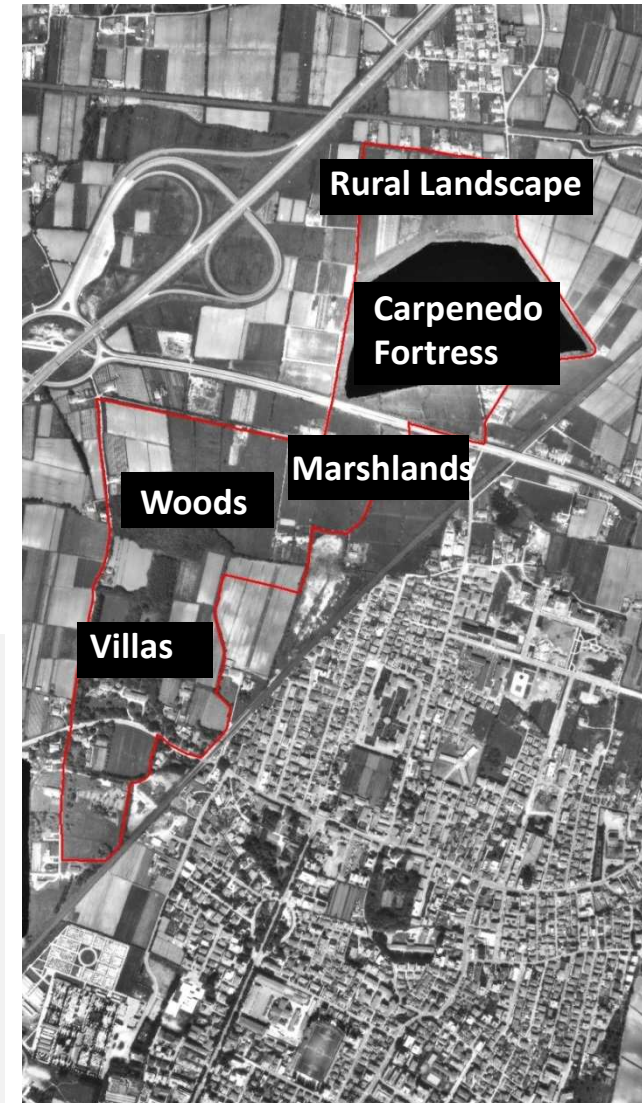
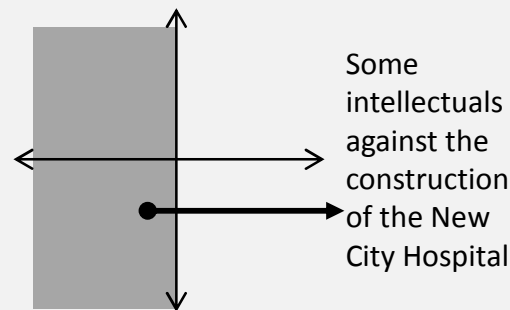
Analysis of un-official documents:

Values:



(The same values)

Circumstances:

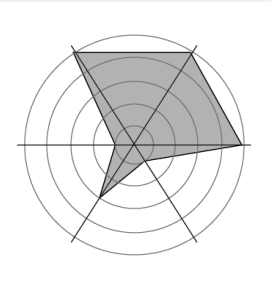


WHICH VALUES HAVE BEEN ATTRIBUTED OVER THE TIME?

An in depth analysis of the official declarations

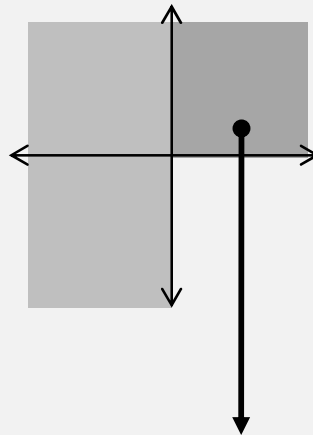
And now?

Values:

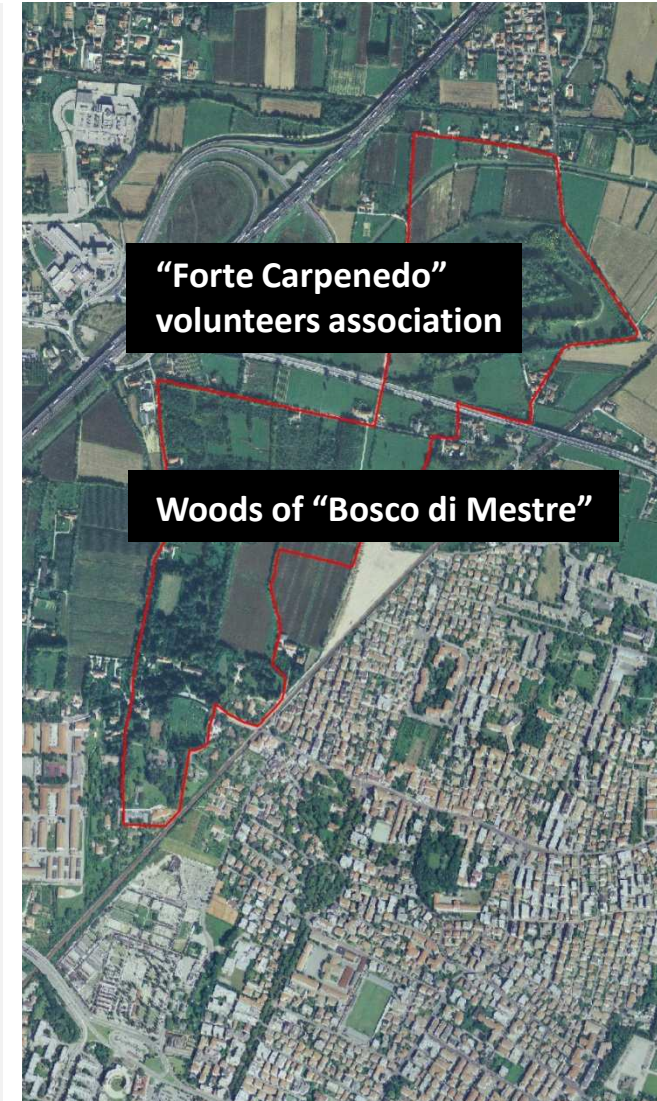


(The same values)

Circumstances:

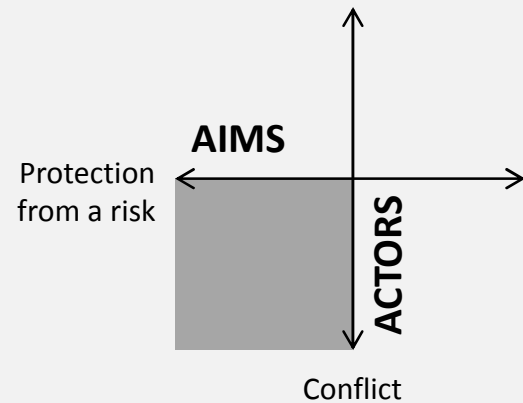


There are synergistic relations between new actors, namely the “Bosco di Mestre” project and the “Forte Carpenedo” association

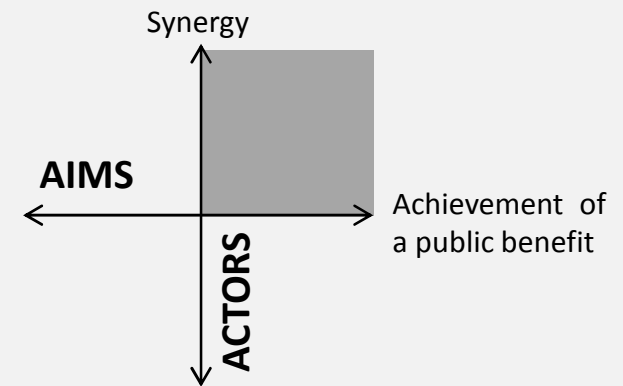


HOW THE LANDSCAPE PLAN CAN MANAGE THESE «CIRCUMSTANCES»?

From this:

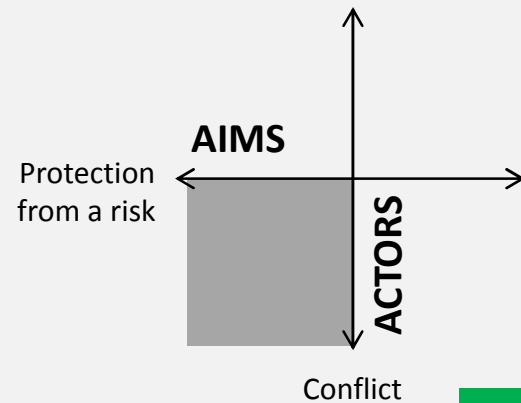


To this:

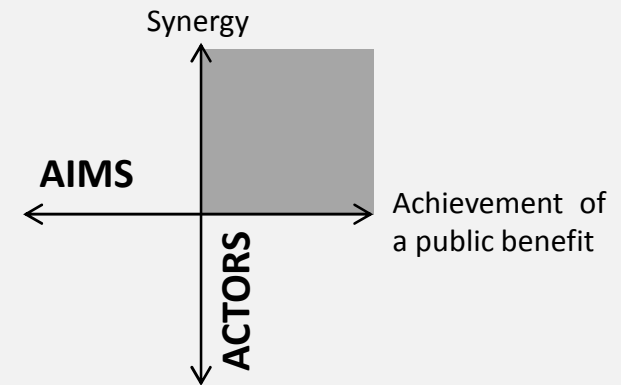


HOW THE LANDSCAPE PLAN CAN MANAGE THESE «CIRCUMSTANCES»?

From this:



To this:



**THROUGH SHARED
LANDSCAPE QUALITY
OBJECTIVES
According to the ELC**

Defining Landscape Democracy conference
Oslo, 3-6 june 2015

Landscape Values and Assessment

Thanks for your attention

Chiara Quaglia

Department of Historical and Geographic Sciences and the Ancient World
University of Padova